



Office of General Services

DESIGN & CONSTRUCTION GROUP
THE GOVERNOR NELSON A. ROCKEFELLER
EMPIRE STATE PLAZA
ALBANY, NY 12242

ADDENDUM NO. 1 TO PROJECT NO. 44894

ELECTRICAL WORK PROVIDE FIRE DETECTION SYSTEM SWAN STREET BUILDING ALBANY, NY 12242

April 2, 2024

NOTE: This Addendum forms a part of the Contract Documents. Insert it in the Project Manual. Acknowledge receipt of this Addendum in the space provided on the Bid Form.

1. Revised Drawings:
 - a. Drawing Nos. G-002, FA-106, FA-107, FA-108, FA-109, FA-114, FA-115, FA-116, FA-117, FA-118, and FA-129, noted "Addendum #1 3/27/2024" accompany this Addendum and supersede the same numbered originally issued drawings.

END OF ADDENDUM

Brady Sherlock, P.E.
Director, Division of Design
Design & Construction

GENERAL NOTES:

- THE SCOPE OF THIS PROJECT INCLUDES PROVIDING A COMPLETELY SUPERVISED, INTELLIGENT, ANALOG, HONEYWELL ADDRESSABLE, IN-BUILDING FIRE ALARM SYSTEM AND NETWORK ARCHITECTURE AS SHOWN ON THE DRAWINGS AND DESCRIBED WITHIN THE ACCOMPANYING SPECIFICATIONS. THE SYSTEMS SHALL INCLUDE ALL WIRING, RACEWAYS, PULL BOXES, TERMINAL CABINETS, OUTLET AND MOUNTING BOXES, CONTROL EQUIPMENT, ALARM AND SUPERVISORY SIGNALS, INITIATING DEVICES, NOTIFICATION APPLIANCES, NOTIFICATION ALARM PANELS, INTERFACE EQUIPMENT, AND ALL OTHER ACCESSORIES AND MISCELLANEOUS ITEMS INCLUDING SOFTWARE, SYSTEM PROGRAMMING AND TESTING REQUIRED FOR A COMPLETE OPERATING SYSTEM EVEN THOUGH EACH ITEM IS NOT SPECIFICALLY MENTIONED OR DESCRIBED. WORK INCLUDES INTERFACING EXISTING FIRE ALARM EQUIPMENT TO PROVIDE UNINTERRUPTED ALARM, DETECTION, AND NOTIFICATION THROUGHOUT THE OCCUPIED BUILDING. FOLLOWING ACCEPTANCE OF THE PROVIDED FIRE ALARM SYSTEM, THE EXISTING SYSTEM SHALL BE DISCONNECTED AND REMOVED. INCLUDE IN BID ALL COSTS ASSOCIATED WITH REMOVAL AND REPLACEMENT OF FIRE ALARM SYSTEM WORK AS DESCRIBED IN THE DRAWINGS AND SPECIFICATIONS.
- EXISTING DEVICES AND EQUIPMENT SHOWN ARE REPRESENTATIVE ONLY. NOT ALL EXISTING DEVICES AND EQUIPMENT INDICATED.
- COMPLY WITH THE FOLLOWING CODES AND STANDARDS:
 - NFPA 70 NATIONAL ELECTRICAL CODE, 2017 EDITION
 - NFPA 72 NATIONAL FIRE ALARM AND SIGNALING CODE, 2016 EDITION
 - NFPA 13 INSTALLATION OF SPRINKLER SYSTEMS, 2016 EDITION
 - NFPA 20 INSTALLATION OF STATIONARY PUMPS FOR FIRE PROTECTION, 2016 EDITION
 - 2020 BUILDING CODE OF NEW YORK STATE
 - 2020 FIRE CODE OF NEW YORK STATE
- THE FIRE ALARM SYSTEM MUST COMPLY WITH THE ADOPTED CODES AND STANDARDS INCLUDING ALL ANNEXES/APPENDICES AT THE TIME FIRE ALARM WORK IS PERMITTED. THE EQUIPMENT PROVIDED BY SHALL BE LISTED FOR THE INTENDED PURPOSE BY A NATIONALLY RECOGNIZED TESTING LABORATORY.
- PROVIDE INSPECTIONS AND FINAL SYSTEM ACCEPTANCE AS REQUIRED.
- COORDINATE ALL DRAWINGS AND SPECIFICATIONS PRIOR TO COMMENCING WORK. QUESTIONS REGARDING DESIGN INTENT OR SYSTEM OPERATION SHALL BE PROMPTLY BROUGHT TO THE ATTENTION OF THE DIRECTOR'S REPRESENTATIVE.
- FIELD VERIFY AND COORDINATE ALL EXISTING CONDITIONS AND DIMENSIONS INDICATED ON DRAWINGS PRIOR TO EXECUTION OF THIS CONTRACT.
- AVOID ALL CONFLICTS WITH EXISTING LIGHT FIXTURES, HVAC DIFFUSERS, GRILLES, DUCTS, CONDUIT AND OTHER PIPING OR OTHER OBSTRUCTIONS ENCOUNTERED. COORDINATE ALL WORK WITH EXISTING FIELD CONDITIONS. PROMPTLY NOTIFY THE DIRECTOR'S REPRESENTATIVE PRIOR TO INITIATING WORK IF ANY MOUNTING LOCATIONS ARE OBSTRUCTED AND/OR IF ANY MOUNTING CONFLICTS OR PROBLEMS ARE DISCOVERED.
- ANY CONFLICTS BETWEEN SPECIFICATIONS AND DRAWINGS SHALL BE BROUGHT TO THE DIRECTOR'S REPRESENTATIVE ATTENTION IMMEDIATELY. DO NOT PROCEED WITH ANY WORK EXCEPT AT OWN RISK, UNTIL CLARIFICATIONS OF CONFLICTS ARE ISSUED BY THE DIRECTOR'S REPRESENTATIVE.
- EXTREME CARE SHALL BE EXERCISED WHEN ROUGHING IN DEVICES SO AS NOT TO DAMAGE THE EXISTING BUILDING FINISHES.
- MOUNT ALL VISUAL WARNING STROBE NOTIFICATION APPLIANCES TO ACHIEVE MAXIMUM VISIBILITY IN ACCORDANCE WITH CURRENT NFPA 72 GUIDELINES.
 - WALL-MOUNTED APPLIANCES SHALL BE FINISHED SUCH THAT THE ENTIRE LENS IS NOT LESS THAN 80 IN. AND NOT GREATER THAN 96 IN. ABOVE THE FINISHED FLOOR OR AT THE MOUNTING HEIGHT SPECIFIED USING THE PERFORMANCE-BASED ALTERNATIVE OF NFPA 72, 2016 EDITION SECTION 18.5.5.8. WHERE LOW CEILING HEIGHTS DO NOT PERMIT WALL MOUNTING AT A MINIMUM OF 80 IN., WALL 12. IN AREAS MOUNTED VISIBLE APPLIANCES SHALL BE MOUNTED WITHIN 6 IN. OF THE CEILING. THE ROOM SIZE COVERED BY A STROBE OF A GIVEN VALUE SHALL BE REDUCED BY TWICE THE DIFFERENCE BETWEEN THE MINIMUM MOUNTING HEIGHT OF 80 IN. AND THE ACTUAL LOWER MOUNTING HEIGHT.
 - VISIBLE APPLIANCES LISTED FOR MOUNTING PARALLEL TO THE FLOOR SHALL BE PERMITTED TO BE LOCATED ON THE CEILING OR SUSPENDED BELOW THE CEILING.
- WITHOUT CEILINGS, RACEWAY SHALL BE INSTALLED AS UNOBTRUSIVELY AS POSSIBLE AS CLOSE AS POSSIBLE TO FLOOR/CEILING SLAB AND PARALLEL AND AT RIGHT ANGLES TO STRUCTURAL STEEL OR CONCRETE ELEMENTS.
- AFTER RACEWAY INSTALLATION, PENETRATIONS IN FIRE RESISTIVE WALLS AND CEILINGS SHALL BE PROPERLY CLEANED AND SEALED TO THE FULL THICKNESS OF THE PENETRATION WITH A LISTED AND APPROVED FIRE STOPPING SYSTEM OF EQUAL OR GREATER FIRE RESISTANCE. UNLESS OTHERWISE NOTED, ALL FLOOR/CEILING SLABS, STAIR ENCLOSURES, VERTICAL SHAFT AND CHASE ENCLOSURES, MASONRY SLAB TO SLAB, MECHANICAL, ELECTRICAL AND FIRE ALARM CLOSET ROOM WALLS SHALL BE CONSIDERED 2 HOUR FIRE RESISTIVE RATED CONSTRUCTION UNLESS OTHERWISE NOTED. AND FIRE STOPPED AS SPECIFIED. REFER TO DRAWINGS FOR EXISTING WALL FIRE RATINGS. PROVIDE UL LISTED THROUGH PENETRATION FIRESTOPPING ON ALL WALL AND FLOOR PENETRATIONS. FIRESTOPPING SHALL BE COMPATIBLE FOR WALL AND FLOOR CONSTRUCTION AS INDICATED. SUBMIT UL ASSEMBLY FOR APPROVAL PRIOR TO INSTALLATION.
- WIRING WITHIN ENCLOSURES: PROVIDE CONDUCTORS PARALLEL WITH OR AT RIGHT ANGLES TO SIDES AND BACK OF THE ENCLOSURE. BUNDLE, LACE, AND TRAIN CONDUCTORS TO TERMINAL POINTS WITH NO EXCESS. CONNECT CONDUCTORS THAT ARE TERMINATED, SPLICED, OR INTERRUPTED IN ANY ENCLOSURE ASSOCIATED WITH THE FIRE ALARM SYSTEM TO TERMINAL BLOCKS. MARK EACH TERMINAL ACCORDING TO THE SYSTEMS WIRING DIAGRAMS. MAKE ALL CONNECTIONS WITH APPROVED CRIMP-ON TERMINAL SPADE LUGS. PRESSURE-TYPE TERMINAL BLOCKS OR PLUS CONNECTORS SPLICES UTILIZING A WIRE NUT ARE NOT ALLOWED. MACHINE LABEL EACH CONDUCTOR AND PROVIDE FIRE ALARM CIRCUIT IDENTIFICATION PER NEC 760.30.
- ALL DEVICES PROVIDED IN LAY-IN ACOUSTICAL TILE CEILINGS OR OTHER SUSPENDED TYPE CEILINGS SHALL BE INSTALLED CENTER OF TILE. PROVIDE STEEL HANGER RODS FROM THE BUILDING STRUCTURE TO SUPPORT DEVICES.
- DRAWINGS ARE DIAGRAMMATIC IN NATURE AND INDICATE APPROXIMATE LOCATION OF DEVICES AND APPLIANCES. FIELD VERIFY THE LOCATION OF ALL DEVICES AND APPLIANCES WITH RESPECT TO EXISTING OBSTRUCTIONS IN ACCORDANCE WITH NFPA 72. PROVIDE ALL NECESSARY CONDUIT AND WIRE IN ACCORDANCE WITH THE APPLICABLE CODES, REGULATIONS, AND MANUFACTURER REQUIREMENTS.
- ALL EXISTING CONDITIONS SHOWN IN THESE PLANS WERE DOCUMENTED AT THE BEGINNING OF THIS PROJECT. ANY CHANGES TO THE EXISTING CONDITIONS AFTERWARDS ARE BEYOND THE CONTROL OF THE DESIGNER OF RECORD. FIELD VERIFY ALL EXISTING CONDITIONS PRIOR TO BEGINNING ANY WORK.
- THE FACILITY WILL BE FULLY OPERATIONAL AND OCCUPIED DURING THE COURSE OF THIS PROJECT. REFER TO THE SPECIFICATIONS FOR WORKING HOUR RESTRICTIONS AND SECURITY REQUIREMENTS. COORDINATE AND SCHEDULE IN ADVANCE ALL WORK WITH THE DIRECTOR'S REPRESENTATIVE.
- ALL MATERIALS SHALL BE GATHERED AT THE END OF THE DESIGNATED WORK HOURS FOR EACH AREA AND STORED WHERE DIRECTED BY THE DIRECTOR'S REPRESENTATIVE.
- REMOVAL OF WORK SHALL BE PERFORMED IN A NEAT AND PROFESSIONAL MANNER. RESTORE, PATCH, PAINT, ETC. ANY INTERIOR/EXTERIOR BUILDING SURFACE TO CLOSELY MATCH THE SURROUNDING CONDITIONS. COORDINATE WITH THE DIRECTOR'S REPRESENTATIVE ON PAINT COLORS.
- EXISTING EQUIPMENT & DEVICES ARE SHOWN FOR REFERENCE ONLY. VERIFY EXISTING CONDITIONS AND BRING ANY DISCREPANCIES TO THE DIRECTOR'S REPRESENTATIVE ATTENTION IN WRITING.
- ALL FIRE ALARM REMOVAL WORK SHALL INCLUDE BUT NOT BE LIMITED TO THE DISCONNECTION, REMOVAL, AND DISPOSAL OF INITIATION AND NOTIFICATION DEVICES, JUNCTION BOXES, WIRE, CABLE, CONDUIT, MOUNTING HARDWARE STRAPS OR CABLES, INCLUDING EXISTING FIRE ALARM CONTROL PANELS AND OTHER SYSTEM COMPONENTS, ETC. PER THE SCOPE OF WORK FOR THIS PROJECT.
- REMOVE ALL FIRE ALARM EQUIPMENT DEVICES, INCLUDING ASSOCIATED WIRING, CONDUITS, COVERS, BOXES, ETC., WHERE INDICATED ON THE PLANS. WHERE THE REMOVAL OF THESE ITEMS DISRUPTS EXISTING WIRING THAT IS TO REMAIN, PROVIDE IN THE CEILING SPACE JUNCTION BOXES AND OTHER DEVICES AND PROVIDE BYPASS NECESSARY TO MAKE CIRCUITS AFFECTED CONTINUOUS AND READY FOR OPERATION. OTHERWISE, WIRING SHALL BE REMOVED BACK TO THE NEAREST ELECTRICAL JUNCTION BOX THAT IS TO REMAIN OR TO THE SOURCE PANELBOARD. REMOVED FIRE ALARM CONTROL PANELS SHALL REMAIN PROPERTY OF THE STATE. TURNOVER TO DIRECTOR'S REPRESENTATIVE.
- FACILITY MUST BE AVAILABLE FOR NORMAL OPERATIONS BY 6AM EVERY WORK DAY. REMOVAL OF ITEMS THAT WILL CAUSE ANY TYPE OF TEMPORARY SHUTDOWN SHALL BE PERFORMED DURING OFF-PEAK HOURS. ALL SUCH OUTAGES SHALL BE SCHEDULED AND COORDINATED WITH THE DIRECTOR'S REPRESENTATIVE TO ENSURE ESSENTIAL SERVICES OR AREAS CAN BE MAINTAINED. PROVIDE FIRE WATCH AT ALL TIMES WHEN SYSTEM IS DISABLED DURING UNOCCUPIED PERIODS.
- ALL EXISTING FIRE ALARM PANELS AND EXISTING NOTIFICATION APPLIANCE POWER EXTENDERS SHALL BE MAINTAINED AS WORKING PANELS THROUGHOUT CONSTRUCTION AND WILL CONTINUE TO MAINTAIN CIRCUITS FOR EXISTING DEVICES TO REMAIN. PROVIDE AS NECESSARY TEMPORARY FEEDS TO ANY DEVICES THAT MAY BE REQUIRED FOR UNINTERRUPTED USE. PROVIDE TEMPORARY CONNECTIONS FOR RELOCATED EQUIPMENT DURING CONSTRUCTION.
- ENSURE THAT ANY DEVICES LOCATED OUTSIDE OF WORK AREA ARE NOT AFFECTED BY REMOVAL WIRING AND/OR CIRCUITING. WIRING/CONDUIT SHALL BE LEFT IN A SAFE CONDITION, LABELED FOR ITS USE, AND EXTENDED AS REQUIRED TO MAINTAIN CIRCUIT CONTINUITY, INCLUDING ALL APPLICABLE CONTROLS.
- PORTIONS OF INITIATION AND NOTIFICATION LOOP RUNS THAT SHALL BE REMOVED OR ABANDONED AS A RESULT OF WORK, BUT WHICH ARE REQUIRED TO REMAIN ENERGIZED, SHALL BE REROUTED AT CONVENIENT LOCATIONS AND RECONNECTED. LOOP EXTENSIONS SHALL MATCH EXISTING WIRING SPECIFICATIONS IN ALL ASPECTS INCLUDING BUT NOT LIMITED TO CABLE TYPE, CONDUIT SIZES, ETC.
- FOR EQUIPMENT AND SYSTEMS INTENDED TO REMAIN IN PLACE OR BE REUSED, PERFORM A FUNCTIONAL CHECK TO CONFIRM PROPER OPERATION PRIOR TO ANY REMOVAL WORK AND/OR CONNECTION TO EQUIPMENT.
- THE TERM "REMOVE" SHALL MEAN DISCONNECTED AND REMOVED BACK TO SOURCE. STOP REMOVAL WHERE DAMAGE TO ADJACENT SURFACES OR AREAS WOULD OCCUR IF FURTHER REMOVAL OCCURRED. CUT CONDUIT OFF AND REMOVE ALL WIRING CONDUCTORS COMPLETELY. RESTORE INTEGRITY OF FIRE RESISTANCE OF FLOOR OR WALL BY FIRE STOPPING ANY REMAINING CONDUIT PASSING THROUGH WALL OR FLOOR. REMOVE CIRCUITS FROM "EXISTING TO REMAIN" CONVENTIONAL DEVICES, FIRE ALARM CONTROL PANELS, AND FIRE PUMP CONTROLLERS AS SHOWN AS "EXISTING" ON THE REMOVAL DRAWINGS.
- PROVIDE FIRE ALARM WIRING AND CONDUIT TO EXISTING DOOR CONTROLLERS FROM FACP/TERMINAL CABINETS (TYP. FOR 15 CONTROLLERS), EACH RUN IS APPROXIMATELY A MAXIMUM OF 500' FROM THE FACP/TERMINAL CABINET. FINAL CONNECTIONS AND PROGRAMMING BY OTHERS.

| NYS UNIFORM BUILDING CODE DATA | |
|--|--|
| ALL WORK MUST COMPLY WITH THE UNIFORM FIRE PREVENTION CODE OF NYS STATE OR THE "UNIFORM CODE". THE PUBLICATIONS INCORPORATED BY REFERENCE INCLUDE THE 2020 BUILDING CODE OF NEW YORK STATE, THE 2020 EXISTING BUILDING CODE OF NEW YORK STATE, THE 2020 PLUMBING CODE OF NEW YORK STATE, THE 2020 MECHANICAL CODE OF NEW YORK STATE, THE 2020 FUEL GAS CODE OF NEW YORK STATE, THE 2020 FIRE CODE OF NEW YORK STATE, THE 2020 PROPERTY MAINTENANCE CODE OF NEW YORK STATE. | |
| BUILDING INFORMATION | ENERGY CONSERVATION |
| OCCUPANCY GROUP USE | B, S-2, U, HIGH-RISE OFFICES, PARKING GARAGES, AND MECHANICAL/ELECTRICAL ROOMS |
| CONSTRUCTION TYPE | B |
| MIXED OCCUPANCIES | NON-SEPARATED MIXED-USE |
| INCIDENTAL USE AREAS | "N/A" |
| CONTROL AREAS | "N/A" |
| EXISTING BUILDING CODE | MECHANICAL SYSTEM TYPE |
| COMPLIANCE METHOD | "N/A" |
| CLASSIFICATION | WORK AREA ALTERATION LEVEL 2 |
| ALL ITEMS BELOW INDICATED WITH "N/A" ARE NOT REQUIRED TO BE MODIFIED OR UPGRADED TO MEET ICNYS 2020 CRITERIA PER THE WORK AREA COMPLIANCE METHOD, CHAPTERS 7 AND 8. | MECHANICAL SYSTEM TYPE |
| HEIGHT AND AREA | WATER HEATING SYSTEM TYPE |
| BUILDINGS AREA | ECONOMIZER |
| BUILDING HEIGHT | CONTROLS |
| | FAN MOTOR |
| | DUCT SEALING |
| | DUCT AND PIPE INSULATION |
| FIRE AND SMOKE RESISTANT CONSTRUCTION | LIGHTING FIXTURE SCHEDULE |
| PROTECTED EXTERIOR WALLS | "N/A" |
| PROTECTED EXTERIOR WALL OPENINGS | "N/A" |
| ALLOWABLE WALL OPENING AREA | "N/A" |
| FIRE WALLS | "N/A" |
| FIRE BARRIERS | "N/A" |
| FIRE PARTITIONS | "N/A" |
| SMOKE BARRIERS | "N/A" |
| INTERIOR FINISHES | MECHANICAL |
| WALLS AND CEILINGS EXITS | "N/A" |
| WALLS AND CEILINGS EXIT ACCESS | "N/A" |
| WALLS AND CEILINGS ROOMS | "N/A" |
| FLOORS | "N/A" |
| FIRE PROTECTION SYSTEMS | PLUMBING |
| FIRE EXTINGUISHING SYSTEM | "N/A" |
| PORTABLE FIRE EXTINGUISHERS | "N/A" |
| FIRE ALARM SYSTEM | "N/A" |
| EMERGENCY VOICE | REQUIRED AND PROVIDED |
| SMOKE DETECTION SYSTEM | "N/A" |
| SMOKE CONTROL | "N/A" |
| SMOKEPROOF ENCLOSURE | "N/A" |
| ACCESSIBILITY | MECHANICAL |
| ROUTE TO PRIMARY FUNCTION AREAS ARE NOT REQUIRED TO BE UPGRADED TO BE ACCESSIBLE PER ICNYS SECTION 305.7, EXCEPTION 3. NO OTHER ALTERATIONS OR WORK IMPACT ITEMS RELATED TO ACCESSIBILITY. | DUCTS AND AIR TRANSFER OPENINGS |
| INTERIOR ENVIRONMENT | "N/A" |
| | COMBUSTION AIR |
| | CHIMNEYS, FLUES, AND GAS VENTS |
| | "N/A" |
| | PLUMBING |
| | FIXTURE COUNT |
| | AVAILABLE STREET WATER PRESSURE |
| | "N/A" |
| | "N/A" |
| LIGHT VENTILATION | ELEVATOR |
| "N/A" | PORTABLE FIRE EXTINGUISHERS |
| "N/A" | EMERGENCY OPERATION |
| | "N/A" |
| | SAFEGUARDS DURING CONSTRUCTION |
| | PEDESTRIAN PROTECTION |
| | "N/A" |
| | FIRE EXTINGUISHERS |
| | MIN. 1 PER FLOOR DURING CONSTRUCTION SHALL BE MAINTAINED |
| | MEANS OF EGRESS |
| | "N/A" |
| | FIRE SERVICE FEATURES |
| | "N/A" FOR EXISTING BUILDING |

UNIFORM CODE COMPLIANCE STATEMENT

TO THE BEST KNOWLEDGE, BELIEF, AND PROFESSIONAL JUDGEMENT OF THE DESIGNERS-OF-RECORD, SUCH PLANS AND SPECIFICATIONS ARE IN COMPLIANCE WITH THE 2020 UNIFORM CODE OF NEW YORK STATE.

ENERGY CODE COMPLIANCE STATEMENT

TO THE BEST KNOWLEDGE, BELIEF, AND PROFESSIONAL JUDGEMENT OF THE DESIGNERS-OF-RECORD, SUCH PLANS AND SPECIFICATIONS ARE IN COMPLIANCE WITH THE 2020 ENERGY CONSERVATION CODE OF NEW YORK STATE.

SYMBOL AND ABBREVIATION LIST

| | | | |
|--|--|--|---|
| | MANUAL PULL STATION MOUNTING HEIGHT: +48" AFF (TO CENTER), UNLESS OTHERWISE NOTED | | FIRE PUMP CONTROLLER |
| | DENOTES CANDELA RATING | | EMERGENCY GENERATOR POWER PANEL |
| | VISUAL STROBE LIGHT - WALL MOUNTED MOUNTING HEIGHT: +90" AFF (TO CENTER), UNLESS OTHERWISE NOTED XXcd = CANDELA RATING | | OPTICAL FIBER NETWORK |
| | VISUAL STROBE LIGHT - CEILING MOUNTED XXcd = CANDELA RATING | | FIBER OPTIC PATCH PANEL |
| | COMBINATION SPEAKER STROBE - CEILING MOUNTED XXcd = CANDELA RATING, TAP SPEAKERS AT 1 WATT UNLESS OTHERWISE NOTED | | ELECTRICAL POWER PANEL |
| | COMBINATION SPEAKER STROBE - WALL MOUNTED MOUNTING HEIGHT: +90" AFF (TO CENTER), UNLESS OTHERWISE NOTED XXcd = CANDELA RATING, TAP SPEAKERS AT 1 WATT UNLESS OTHERWISE NOTED | | END OF LINE RESISTOR |
| | FIRE ALARM BELL - VIBRATING | | COINO2 GAS DETECTOR |
| | FIRE ALARM BELL | | SMOKE DETECTOR - PHOTO ELECTRIC; WALL MOUNTED |
| | FIRE ALARM HORN | | ABORT STATION |
| | SPEAKER ONLY - WALL MOUNTED | | MANUAL DISCHARGE PULL STATION |
| | SPEAKER ONLY - CEILING MOUNTED | | ZONE IDENTIFICATION |
| | DOOR HOLDER RELEASE | | FIRE ALARM CONNECTION TO SPRINKLER PRESSURE SWITCH |
| | SMOKE DETECTOR - PHOTOELECTRIC; CEILING MOUNTED; W = WALL MOUNTED | | FIREFIGHTER PHONE JACK |
| | SMOKE DETECTOR - ELEVATOR RECALL; CEILING MOUNTED | | EXISTING FIRE SPRINKLER WATERFLOW/PRESSURE SWITCH, # = QUANTITY |
| | HEAT DETECTOR - 135°F FIXED TEMPERATURE UON; CEILING MOUNTED; C = CONVENTIONAL | | EXISTING FIRE SPRINKLER QS-Y GATE CONTROL VALVE, # = QUANTITY |
| | DUCT SMOKE DETECTOR | | DEVICE TO BE REMOVED |
| | DUCT DETECTOR REMOTE TEST SWITCH W/ ALARM LED INDICATOR | | OUT OF PROJECT SCOPE |
| | CARBON MONOXIDE DETECTOR; CEILING MOUNTED; W = WALL MOUNTED | | EXISTING |
| | EMERGENCY PHONE (TO REMAIN) | | CONDUIT |
| | BEAM SMOKE DETECTOR - TRANSMITTER | | AIR HANDLING UNIT |
| | BEAM SMOKE DETECTOR - RECEIVER | | TYPICAL |
| | ADDRESSABLE OUTPUT MODULE/CONTROL RELAY, # = QUANTITY | | UNLESS OTHERWISE NOTED |
| | ADDRESSABLE MONITOR MODULE, DUAL INPUT, # = QUANTITY | | SIGNALING LINE CIRCUIT |
| | LED TEXTUAL NOTIFICATION SIGN | | NOTIFICATION APPLIANCE CIRCUIT |
| | FIRE ALARM TERMINAL CABINET | | INITIATING DEVICE CIRCUIT |
| | INTERCONNECTED CONTROL UNIT | | SPEAKER CIRCUIT |
| | NOTIFICATION APPLIANCE REMOTE AUXILIARY POWER SUPPLIES | | STAIR |
| | AMPLIFIER | | CONDUIT RISER UP |
| | AUTOMATIC FIRE SUPPRESSION SYSTEM | | CONDUIT RISER DOWN |
| | SURGE PROTECTION DEVICE | | |
| | SURGE PROTECTION DEVICE | | |
| | REMOTE ANNUNCIATOR | | |
| | LED SIGN ETHERNET SWITCH | | |
| | PROVIDE SPRINKLER SYSTEM VALVE TAMPER SWITCH AND FIRE ALARM CONNECTION, # = QUANTITY | | |
| | FIRE ALARM CONNECTION TO SPRINKLER SYSTEM WATERFLOW SWITCH | | |
| | FIRE ALARM CONNECTION TO SPRINKLER SYSTEM LOW AIR PRESSURE SWITCH | | |
| | FIRE ALARM CONTROL PANEL | | |
| | ELEVATOR RECALL TERMINAL CABINET | | |
| | FIRE SERVICE TELEPHONE MASTER CONTROL PANEL | | |
| | EXISTING DOOR ACCESS CONTROL PANEL | | |

CONSULTANT

CERTIFICATE OF AUTHORIZATION #: 018416



GHD Consulting Services Inc.

WARNING:

THE ALTERATION OF THIS MATERIAL IN ANY WAY, UNLESS DONE UNDER THE DIRECTION OF A COMPARABLE PROFESSIONAL, I.E. ARCHITECT FOR AN ARCHITECT, ENGINEER FOR AN ENGINEER OR LANDSCAPE ARCHITECT FOR A LANDSCAPE ARCHITECT, IS A VIOLATION OF THE NEW YORK STATE EDUCATION LAW AND/OR REGULATIONS AND IS A CLASS "A" MISDEMEANOR.



REGISTRATION EXPIRES: JUNE 30, 2026

CONTRACT:

ELECTRICAL

TITLE: PROVIDE FIRE DETECTION SYSTEM

LOCATION: SWAN STREET BUILDING
EMPIRE STATE PLAZA
ALBANY, NY

CLIENT: OGS REAL PROPERTY MANAGEMENT

| MARK | DATE | DESCRIPTION |
|------|------------|-------------|
| | 03/27/2024 | ADDENDUM #1 |

PROJECT NUMBER: 44894-E

DESIGNED BY: BGRITK

DRAWN BY: BGRITK

FIELD CHECK:

APPROVED:

SHEET TITLE: GENERAL NOTES, SYMBOL AND ABBREVIATION LIST

DRAWING NUMBER: G-002

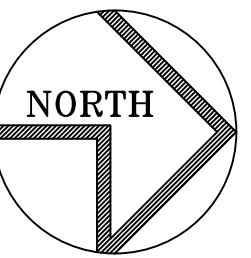
SHEET 2 of 82



GHD Consulting Services Inc.

WARNING:

THE ALTERATION OF THIS MATERIAL IN ANY WAY, UNLESS DONE UNDER THE DIRECTION OF A COMPARABLE PROFESSIONAL, I.E. ARCHITECT FOR AN ARCHITECT, ENGINEER FOR AN ENGINEER OR LANDSCAPE ARCHITECT FOR A LANDSCAPE ARCHITECT, IS A VIOLATION OF THE NEW YORK STATE EDUCATION LAW AND/OR REGULATIONS AND IS A CLASS 'A' MISDEMEANOR.



REGISTRATION EXPIRES:
JUNE 30, 2026

CONTRACT:

ELECTRICAL

TITLE: PROVIDE FIRE DETECTION SYSTEM

LOCATION: SWAN STREET BUILDING
EMPIRE STATE PLAZA
ALBANY, NY

CLIENT: OGS REAL PROPERTY
MANAGEMENT

| | | |
|--|--|--|
| | | |
| | | |
| | | |
| | | |
| | | |
| | | |

| | | |
|------|------|-------------|
| MARK | DATE | DESCRIPTION |
|------|------|-------------|

| | |
|-----------------|---------|
| PROJECT NUMBER: | 44894-E |
| DESIGNED BY: | BGR TK |
| DRAWN BY: | BGR TK |
| FIELD CHECK: | |
| APPROVED: | |

SHEET TITLE:
**LEVEL B2 - CORE 1
PLAN**

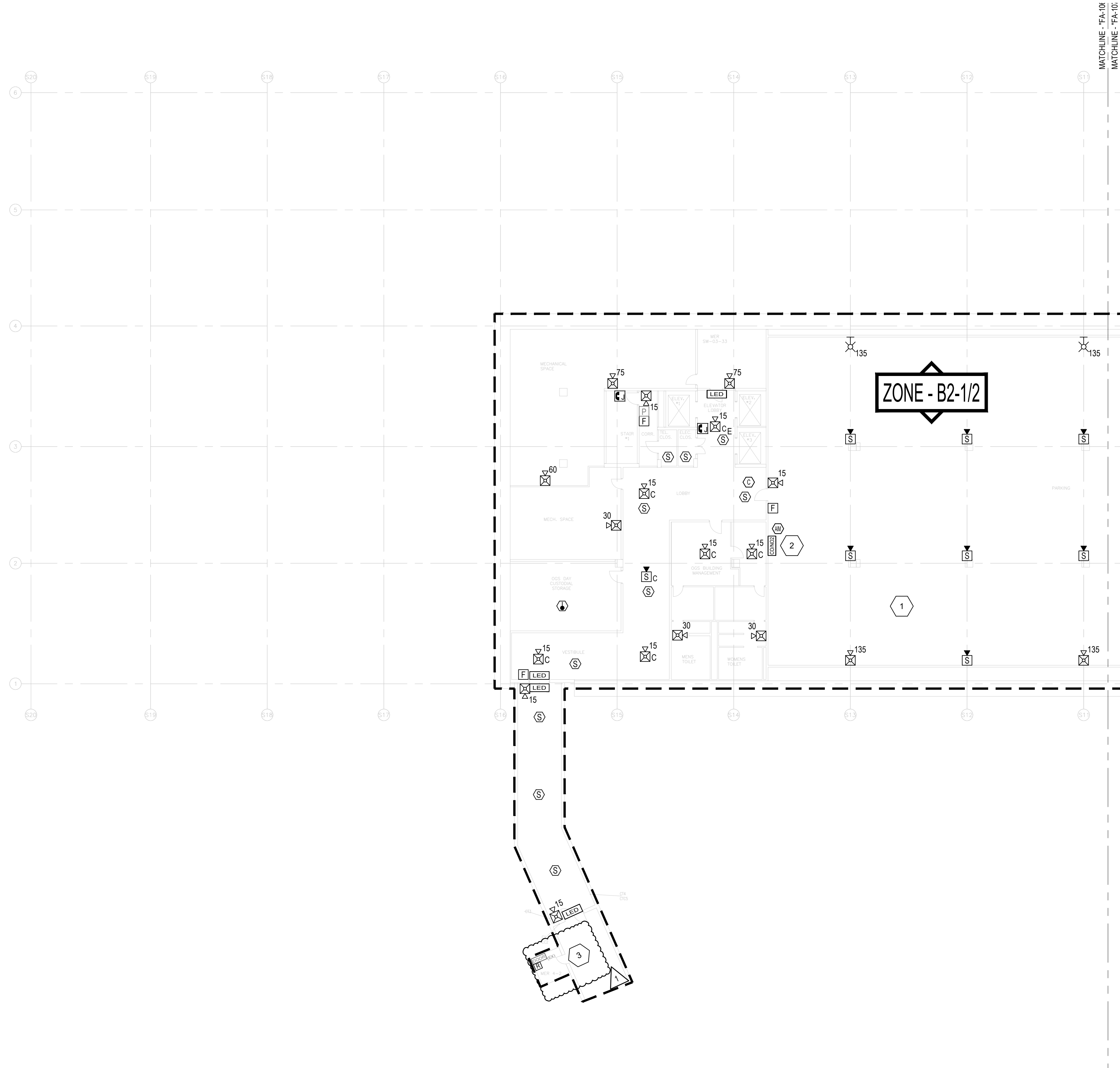
DRAWING NUMBER:
FA-106

DRAWING GENERAL NOTES

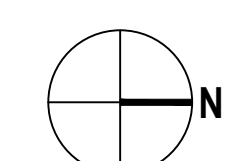
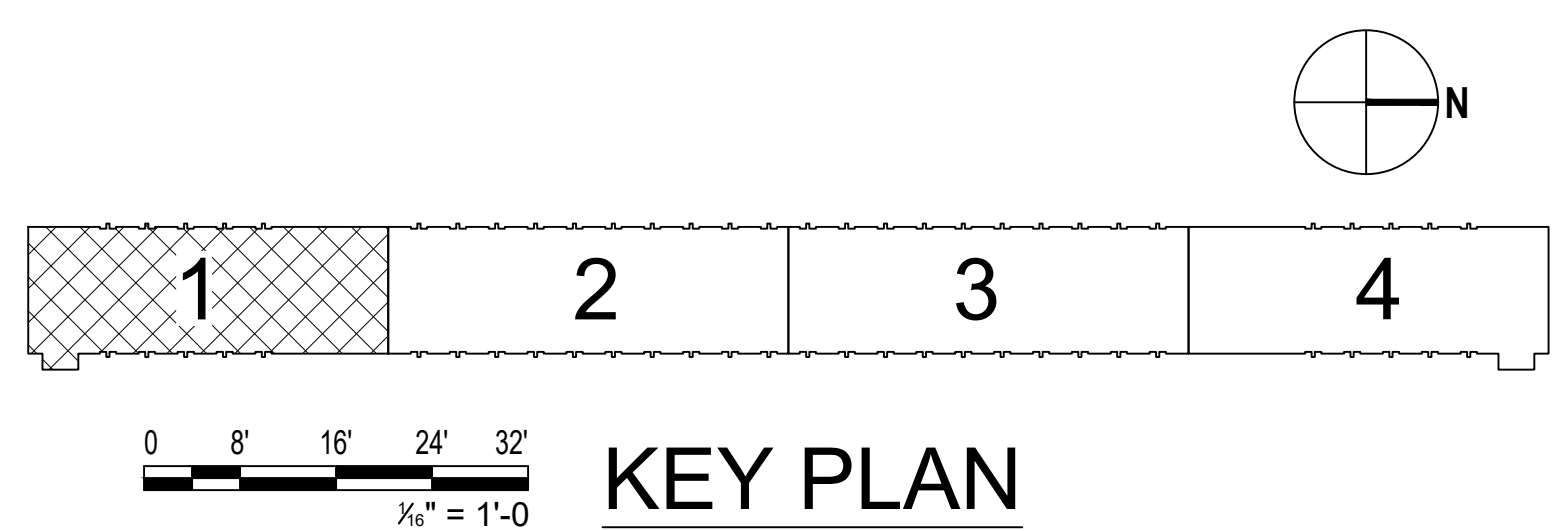
1. PROVIDE ALL WIRING ABOVE CEILINGS IN AREAS WITH FINISHED CEILINGS (I.E. GYP, ACT) UNLESS OTHERWISE NOTED.
2. PROVIDE ALL CONDUIT EXPOSED IN AREAS WITH NO FINISHED CEILINGS (I.E. MECHANICAL ROOMS, ELECTRICAL CLOSETS) UNLESS OTHERWISE NOTED.
3. PROVIDE ALL WIRING AND CONDUIT WITH THE REQUIRED SUPPORT/HANGERS. INSTALL ALL SUPPORTS FROM THE BUILDING STRUCTURAL STEEL.
4. INSTALL ALL INITIATING DEVICES IN A MANNER THAT PROVIDES ACCESSIBILITY FOR PERIODIC INSPECTION, TESTING AND MAINTENANCE.

DRAWING KEYNOTES

1. PROVIDE WEATHERPROOF DEVICES IN UNCONDITIONED PARKING AREAS. PROVIDE MINI-ADDRESSABLE MONITOR MODULES WITHIN WEATHERPROOF NEMA 4X BACKBOXES IN UNCONDITIONED PARKING AREAS.
2. PROVIDE ADDRESSABLE MONITOR MODULE FOR CO/NO2 GAS DETECTOR.
3. PROVIDE WIRE, CONDUIT, AND AN ADDRESSABLE RELAY OR CONTROL MODULE WITHIN 3 FEET OF THE ACCESS DOOR CONTROLLER TO RELEASE DOORS UPON ANY FIRE ALARM CONDITION FROM THE BUILDING FIRE ALARM SYSTEM. CONTRACTOR TO COORDINATE WITH THE DIRECTOR'S REPRESENTATIVE AND DOOR ACCESS CONTROL REPRESENTATIVE FOR WIRING CONNECTION REQUIREMENTS.



1 LEVEL B2 - CORE 1
SCALE: 1/16" = 1'-0"

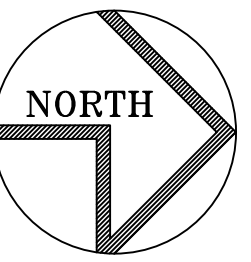




GHD Consulting Services Inc.

WARNING:

THE ALTERATION OF THIS MATERIAL IN ANY WAY, UNLESS DONE UNDER THE DIRECTION OF A COMPARABLE PROFESSIONAL, I.E. ARCHITECT FOR AN ARCHITECT, ENGINEER FOR AN ENGINEER OR LANDSCAPE ARCHITECT FOR A LANDSCAPE ARCHITECT, IS A VIOLATION OF THE NEW YORK STATE EDUCATION LAW AND/OR REGULATIONS AND IS A CLASS 'A' MISDEMEANOR.



REGISTRATION EXPIRES:
JUNE 30, 2026

CONTRACT:

ELECTRICAL

TITLE: PROVIDE FIRE DETECTION SYSTEM

LOCATION: SWAN STREET BUILDING
EMPIRE STATE PLAZA
ALBANY, NY

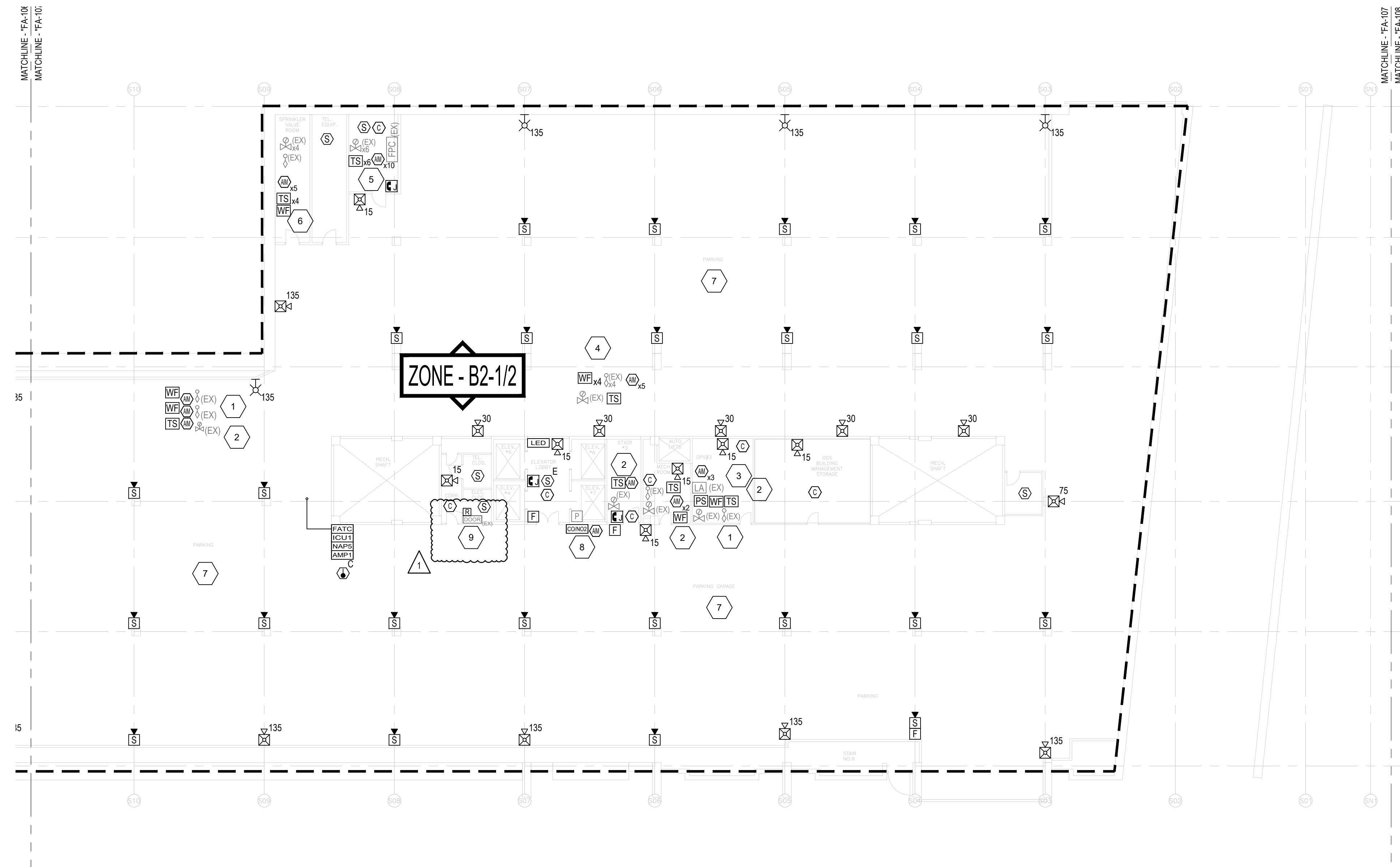
CLIENT: OGS REAL PROPERTY
MANAGEMENT

DRAWING GENERAL NOTES

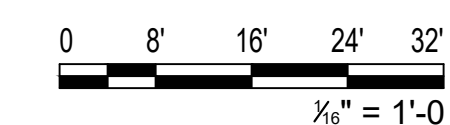
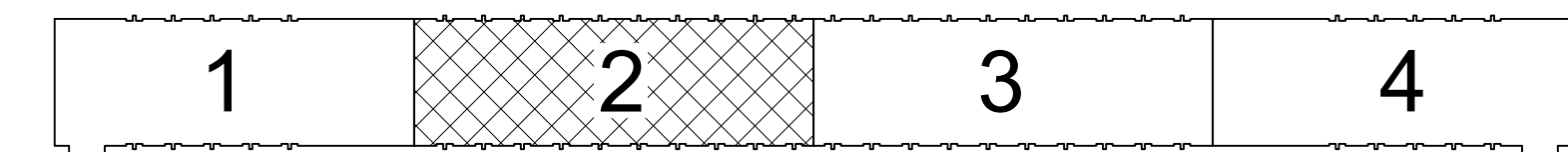
1. PROVIDE ALL WIRING ABOVE CEILINGS IN AREAS WITH FINISHED CEILINGS (I.E. GYP, ACT) UNLESS OTHERWISE NOTED.
2. PROVIDE ALL CONDUIT EXPOSED IN AREAS WITH NO FINISHED CEILINGS (I.E. MECHANICAL ROOMS, ELECTRICAL CLOSETS) UNLESS OTHERWISE NOTED.
3. PROVIDE ALL WIRING AND CONDUIT WITH THE REQUIRED SUPPORT/HANGERS. INSTALL ALL SUPPORTS FROM THE BUILDING STRUCTURAL STEEL.
4. INSTALL ALL INITIATING DEVICES IN A MANNER THAT PROVIDES ACCESSIBILITY FOR PERIODIC INSPECTION, TESTING AND MAINTENANCE.

DRAWING KEYNOTES

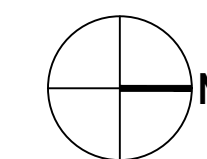
1. PROVIDE ONE (1) ADDRESSABLE INPUT MODULE TO MONITOR THE EXISTING SPRINKLER SYSTEM FLOW SWITCH.
2. PROVIDE TAMPER SWITCH AND ONE (1) ADDRESSABLE MONITOR MODULE TO MONITOR THE EXISTING SPRINKLER SYSTEM OS-Y CONTROL VALVE.
3. PROVIDE ONE (1) ADDRESSABLE INPUT MODULE TO MONITOR THE EXISTING SPRINKLER SYSTEM LOW AIR PRESSURE SWITCH.
4. PROVIDE ONE (1) TAMPER SWITCHES AND ONE (1) ADDRESSABLE INPUT MODULES FOR THE EXISTING OS-Y CONTROL VALVES, FOUR (4) ADDRESSABLE INPUT MODULES FOR THE EXISTING SPRINKLER SYSTEM WATERFLOW/PRESSURE SWITCHES.
5. PROVIDE SIX (6) TAMPER SWITCHES AND SIX (6) ADDRESSABLE INPUT MODULES FOR THE EXISTING SPRINKLER SYSTEM VALVES, FOUR (4) ADDRESSABLE INPUT MODULES TO MONITOR FIRE PUMP RUN, PHASE REVERSAL, LOSS OF PHASE AND CONNECTED TO ALTERNATE SOURCE OF POWER.
6. PROVIDE FOUR (4) TAMPER SWITCHES AND FOUR (4) ADDRESSABLE INPUT MODULES FOR THE EXISTING OS-Y CONTROL VALVES AND ONE (1) ADDRESSABLE INPUT MODULE FOR THE EXISTING SPRINKLER SYSTEM WATERFLOW SWITCH.
7. PROVIDE WEATHERPROOF DEVICES IN UNCONDITIONED PARKING AREAS. PROVIDE MINI-ADDRESSABLE MONITOR MODULES WITHIN WEATHERPROOF NEMA 4X BACK BOXES IN UNCONDITIONED PARKING AREAS.
8. PROVIDE ADDRESSABLE MONITOR MODULE FOR CO/NO2 GAS DETECTOR.
9. PROVIDE WIRE, CONDUIT, AND AN ADDRESSABLE RELAY OR CONTROL MODULE WITHIN 3 FEET OF THE ACCESS DOOR CONTROLLER TO RELEASE DOORS UPON ANY FIRE ALARM CONDITION FROM THE BUILDING FIRE ALARM SYSTEM. CONTRACTOR TO COORDINATE WITH THE DIRECTOR'S REPRESENTATIVE AND DOOR ACCESS CONTROL REPRESENTATIVE FOR WIRING CONNECTION REQUIREMENTS.



1 LEVEL B2 - CORE 2
SCALE: 1/16" = 1'-0"



KEY PLAN



| | | |
|--|--|--|
| | | |
| | | |
| | | |
| | | |
| | | |
| | | |

| | | |
|------|------|-------------|
| MARK | DATE | DESCRIPTION |
| | | |
| | | |
| | | |
| | | |
| | | |

| | |
|-----------------|---------|
| PROJECT NUMBER: | 44894-E |
| DESIGNED BY: | BGR/K |
| DRAWN BY: | BGR/K |
| FIELD CHECK: | |
| APPROVED: | |

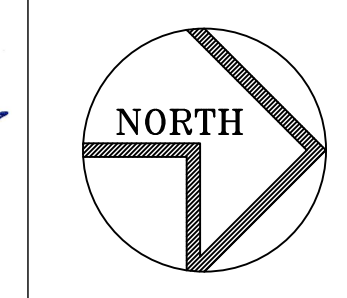
SHEET TITLE:
**LEVEL B2 - CORE 2
PLAN**

DRAWING NUMBER:
FA-107



GHD Consulting Services Inc.

WARNING:
THE ALTERATION OF THIS MATERIAL IN ANY WAY, UNLESS DONE UNDER THE DIRECTION OF A COMPARABLE PROFESSIONAL, I.E. ARCHITECT FOR AN ARCHITECT, ENGINEER FOR AN ENGINEER OR LANDSCAPE ARCHITECT FOR A LANDSCAPE ARCHITECT, IS A VIOLATION OF THE NEW YORK STATE EDUCATION LAW AND/OR REGULATIONS AND IS A CLASS 'A' MISDEMEANOR.



REGISTRATION EXPIRES:
JUNE 30, 2026

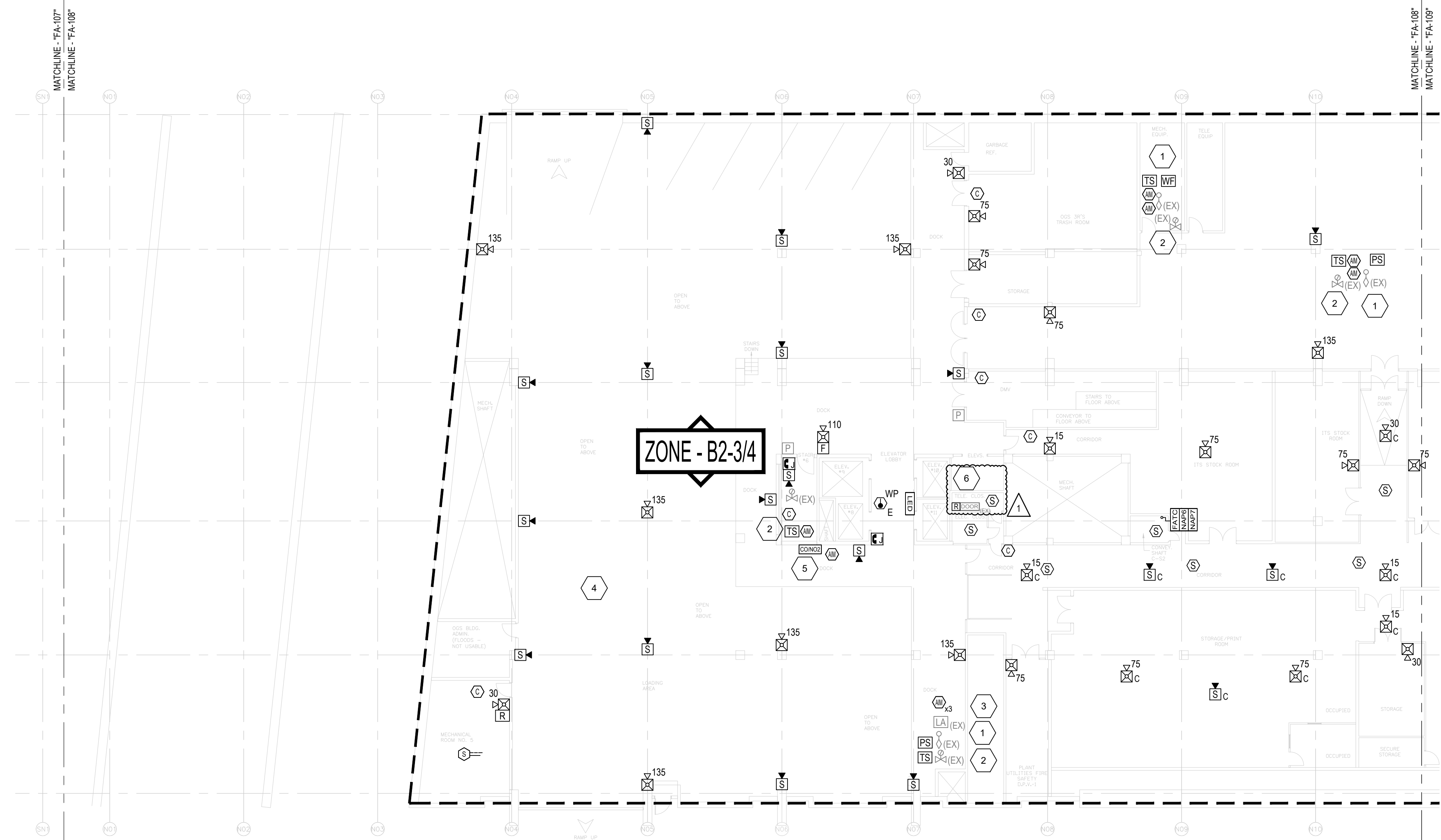
CONTRACT: **ELECTRICAL**
TITLE: PROVIDE FIRE DETECTION SYSTEM
LOCATION: SWAN STREET BUILDING, EMPIRE STATE PLAZA, ALBANY, NY
CLIENT: OGS REAL PROPERTY MANAGEMENT

DRAWING GENERAL NOTES

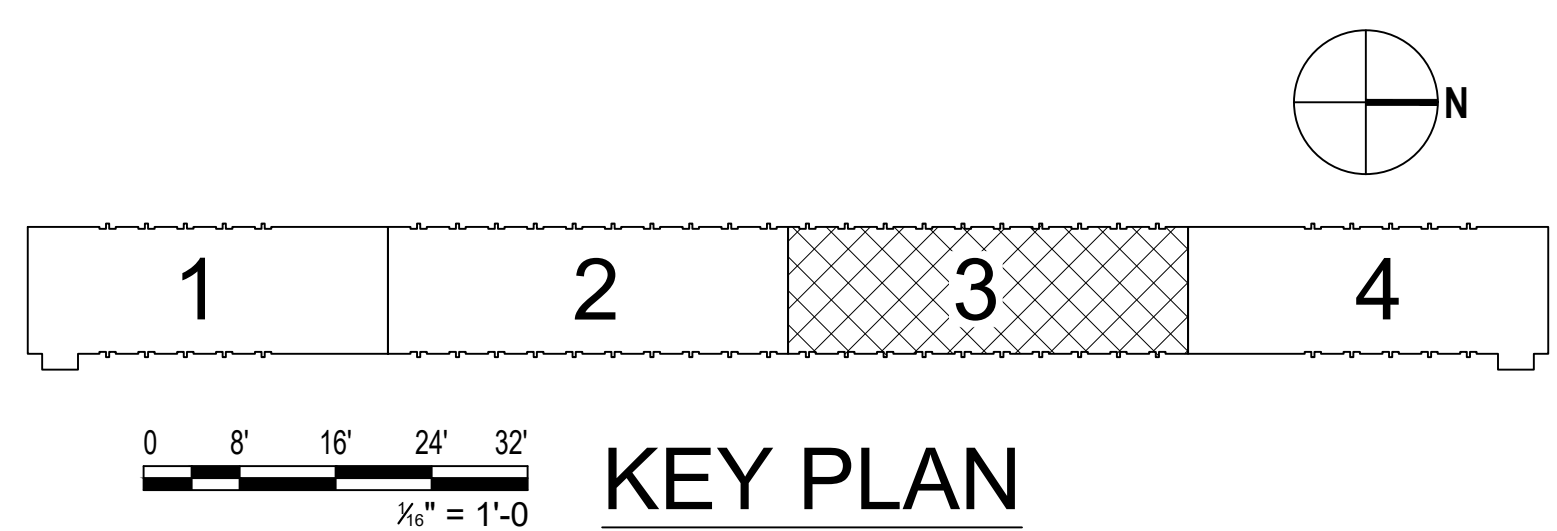
1. PROVIDE ALL WIRING ABOVE CEILINGS IN AREAS WITH FINISHED CEILINGS (I.E. GYP, ACT) UNLESS OTHERWISE NOTED.
2. PROVIDE ALL CONDUIT EXPOSED IN AREAS WITH NO FINISHED CEILINGS (I.E. MECHANICAL ROOMS, ELECTRICAL CLOSETS) UNLESS OTHERWISE NOTED.
3. PROVIDE ALL WIRING AND CONDUIT WITH THE REQUIRED SUPPORT/HANGERS. INSTALL ALL SUPPORTS FROM THE BUILDING STRUCTURAL STEEL.
4. INSTALL ALL INITIATING DEVICES IN A MANNER THAT PROVIDES ACCESSIBILITY FOR PERIODIC INSPECTION, TESTING AND MAINTENANCE.

DRAWING KEYNOTES

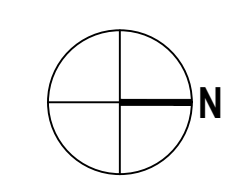
1. PROVIDE ONE (1) ADDRESSABLE INPUT MODULE TO MONITOR THE EXISTING SPRINKLER SYSTEM WATERFLOW PRESSURE SWITCH.
2. PROVIDE TAMPER SWITCH AND ONE (1) ADDRESSABLE MONITOR MODULE TO MONITOR THE EXISTING SPRINKLER SYSTEM OS-Y CONTROL VALVE.
3. PROVIDE ONE (1) ADDRESSABLE INPUT MODULE TO MONITOR THE EXISTING SPRINKLER SYSTEM LOW AIR PRESSURE SWITCH.
4. PROVIDE WEATHERPROOF DEVICES IN UNCONDITIONED PARKING AREAS. PROVIDE MINI-ADDRESSABLE MONITOR MODULES WITHIN WEATHERPROOF NEMA 4X BACK BOXES IN UNCONDITIONED PARKING AREAS.
5. PROVIDE ADDRESSABLE MONITOR MODULE FOR CO/NO2 GAS DETECTOR.
6. PROVIDE WIRE, CONDUIT, AND AN ADDRESSABLE RELAY OR CONTROL MODULE WITHIN 3 FEET OF THE ACCESS DOOR CONTROLLER TO RELEASE DOORS UPON ANY FIRE ALARM CONDITION FROM THE BUILDING FIRE ALARM SYSTEM. CONTRACTOR TO COORDINATE WITH THE DIRECTOR'S REPRESENTATIVE AND DOOR ACCESS CONTROL REPRESENTATIVE FOR WIRING CONNECTION REQUIREMENTS.



1 LEVEL B2 - CORE 3
SCALE: 1/16" = 1'-0"



KEY PLAN



| MARK | DATE | DESCRIPTION |
|-------------------------------------|------------|-------------|
| ▲ | 03/27/2024 | ADDENDUM #1 |
| PROJECT NUMBER: 44894-E | | |
| DESIGNED BY: BGR/K | | |
| DRAWN BY: BGR/K | | |
| FIELD CHECK: | | |
| APPROVED: | | |
| SHEET TITLE: LEVEL B2 - CORE 3 PLAN | | |
| DRAWING NUMBER: FA-108 | | |
| SHEET 49 OF 82 | | |

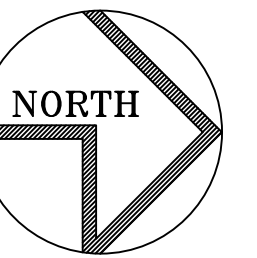
Mar 27, 2024, 1:49pm
C:\CAD\Temp\AcPublish\14260\FA-108.dwg
36x24 PLOT SHEET



GHD Consulting Services Inc.

WARNING:

THE ALTERATION OF THIS MATERIAL IN ANY WAY, UNLESS DONE UNDER THE DIRECTION OF A COMPARABLE PROFESSIONAL, I.E. ARCHITECT FOR AN ARCHITECT, ENGINEER FOR AN ENGINEER OR LANDSCAPE ARCHITECT FOR A LANDSCAPE ARCHITECT, IS A VIOLATION OF THE NEW YORK STATE EDUCATION LAW AND/OR REGULATIONS AND IS A CLASS "A" MISDEMEANOR.



REGISTRATION EXPIRES:
JUNE 30, 2026

CONTRACT:

ELECTRICAL

TITLE: PROVIDE FIRE DETECTION SYSTEM

LOCATION: SWAN STREET BUILDING
EMPIRE STATE PLAZA
ALBANY, NY

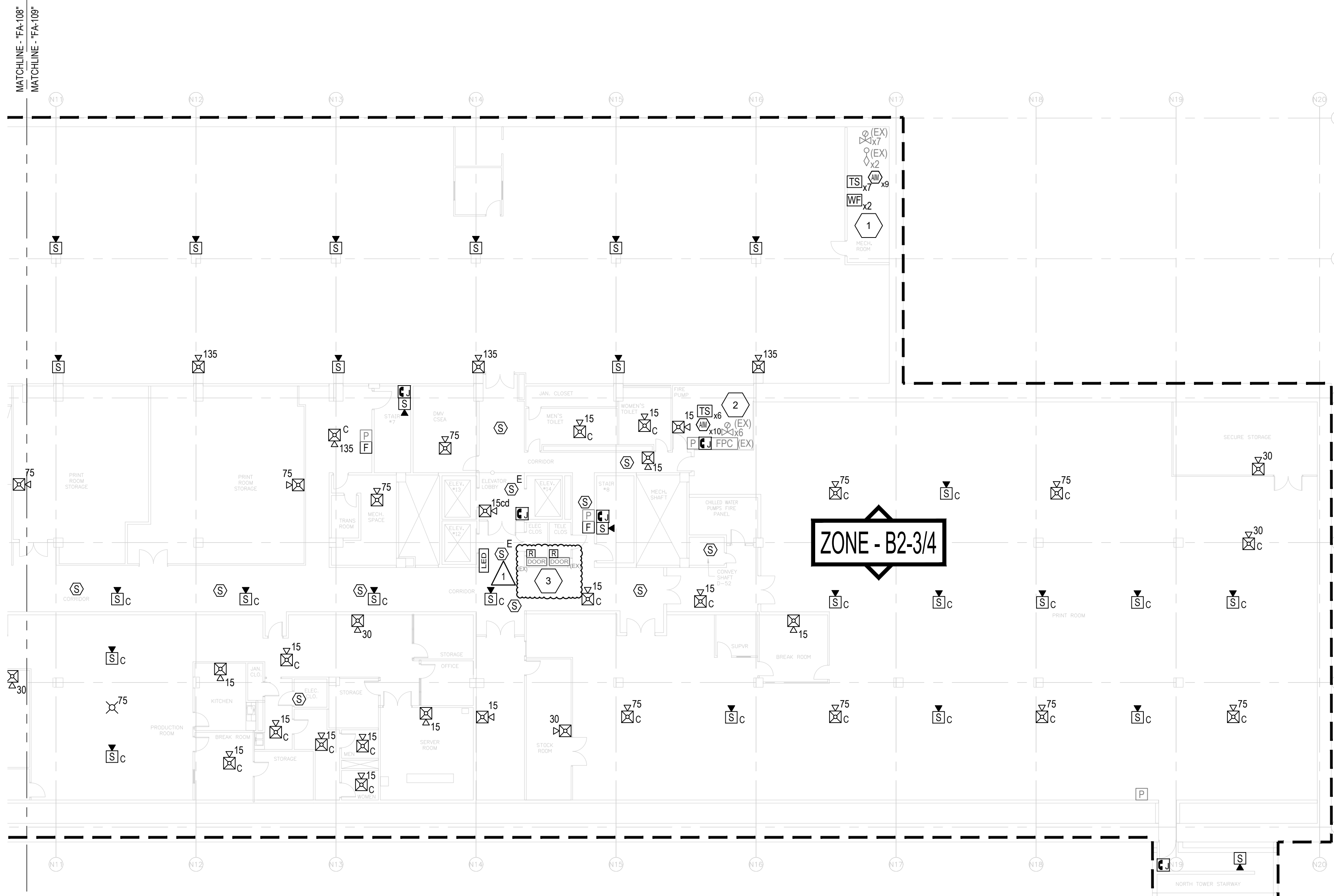
CLIENT: OGS REAL PROPERTY
MANAGEMENT

DRAWING GENERAL NOTES

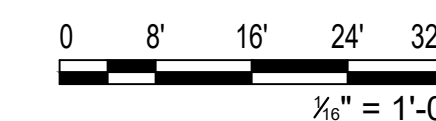
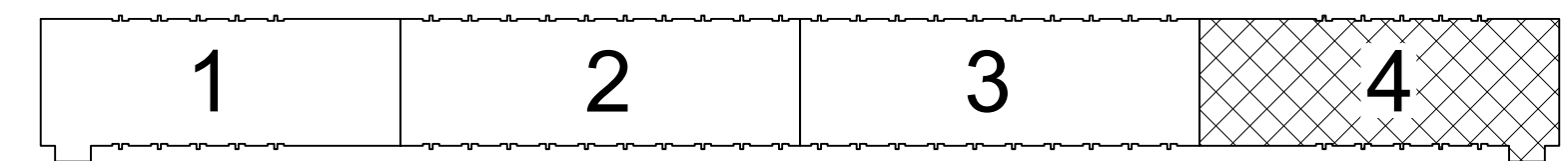
1. PROVIDE ALL WIRING ABOVE CEILINGS IN AREAS WITH FINISHED CEILINGS (I.E. GYP, ACT) UNLESS OTHERWISE NOTED.
2. PROVIDE ALL CONDUIT EXPOSED IN AREAS WITH NO FINISHED CEILINGS (I.E. MECHANICAL ROOMS, ELECTRICAL CLOSETS) UNLESS OTHERWISE NOTED.
3. PROVIDE ALL WIRING AND CONDUIT WITH THE REQUIRED SUPPORT/HANGERS. INSTALL ALL SUPPORTS FROM THE BUILDING STRUCTURAL STEEL.
4. INSTALL ALL INITIATING DEVICES IN A MANNER THAT PROVIDES ACCESSIBILITY FOR PERIODIC INSPECTION, TESTING AND MAINTENANCE.

DRAWING KEYNOTES

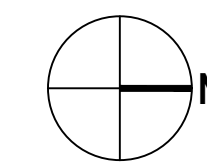
1. PROVIDE SEVEN (7) TAMPER SWITCHES AND SEVEN (7) ADDRESSABLE INPUT MODULES TO MONITOR THE EXISTING SPRINKLER SYSTEM OS-Y CONTROL VALVE AND TWO (2) ADDRESSABLE INPUT MODULES TO MONITOR THE EXISTING SPRINKLER SYSTEM WATERFLOW/PRESSURE SWITCHES.
2. PROVIDE SIX (6) TAMPER SWITCHES AND SIX (6) ADDRESSABLE INPUT MODULES TO MONITOR THE EXISTING SPRINKLER SYSTEM OS-Y CONTROL VALVES AND FOUR (4) ADDRESSABLE MONITOR MODULES TO MONITOR FIRE PUMP RUN, PHASE REVERSAL, LOSS OF PHASE AND CONNECTED TO ALTERNATE SOURCE OF POWER.
3. PROVIDE WIRE, CONDUIT, AND AN ADDRESSABLE RELAY OR CONTROL MODULE WITHIN 3 FEET OF THE ACCESS DOOR CONTROLLER TO RELEASE DOORS UPON ANY FIRE ALARM CONDITION FROM THE BUILDING FIRE ALARM SYSTEM. CONTRACTOR TO COORDINATE WITH THE DIRECTOR'S REPRESENTATIVE AND DOOR ACCESS CONTROL REPRESENTATIVE FOR WIRING CONNECTION REQUIREMENTS.



1 LEVEL B2 - CORE 4
SCALE: 1/16" = 1'-0"



KEY PLAN



| | | |
|--|--|--|
| | | |
| | | |
| | | |
| | | |
| | | |
| | | |
| | | |
| | | |

| | | |
|-----------------|------------|-------------|
| Δ | 03/27/2024 | ADDENDUM #1 |
| MARK | DATE | DESCRIPTION |
| PROJECT NUMBER: | 44894-E | |
| DESIGNED BY: | BGR TK | |
| DRAWN BY: | BGR TK | |
| FIELD CHECK: | | |
| APPROVED: | | |

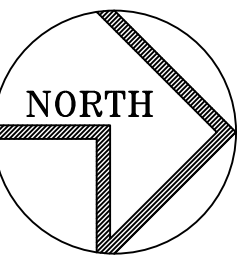
SHEET TITLE:
**LEVEL B2 - CORE 4
PLAN**

DRAWING NUMBER:
FA-109



GHD Consulting Services Inc.

WARNING:
THE ALTERATION OF THIS MATERIAL IN ANY WAY, UNLESS DONE UNDER THE DIRECTION OF A COMPARABLE PROFESSIONAL, I.E. ARCHITECT FOR AN ARCHITECT, ENGINEER FOR AN ENGINEER OR LANDSCAPE ARCHITECT FOR A LANDSCAPE ARCHITECT, IS A VIOLATION OF THE NEW YORK STATE EDUCATION LAW AND/OR REGULATIONS AND IS A CLASS 'A' MISDEMEANOR.



REGISTRATION EXPIRES:
JUNE 30, 2026

CONTRACT:
ELECTRICAL

TITLE:
PROVIDE FIRE DETECTION SYSTEM

LOCATION:
SWAN STREET BUILDING
EMPIRE STATE PLAZA
ALBANY, NY

CLIENT:
OGS REAL PROPERTY
MANAGEMENT

| MARK | DATE | DESCRIPTION |
|------|------------|-------------|
| ▲ | 03/27/2024 | ADDENDUM #1 |

PROJECT NUMBER: 44894-E
DESIGNED BY: BGRTK
DRAWN BY: BGRTK
FIELD CHECK:
APPROVED:

SHEET TITLE:
LEVEL 1 - CORE 1
PLAN

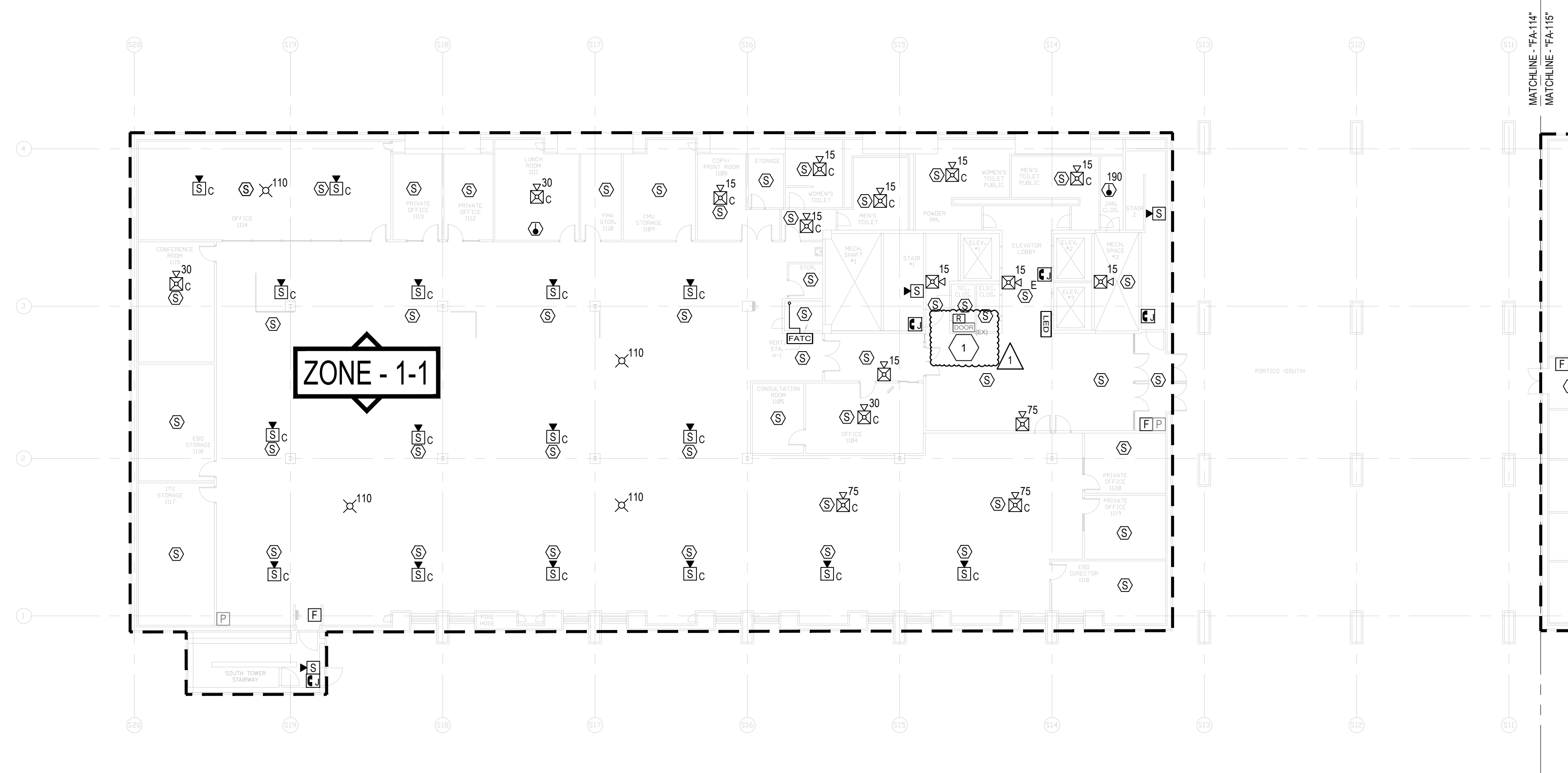
DRAWING NUMBER:
FA-114

DRAWING GENERAL NOTES

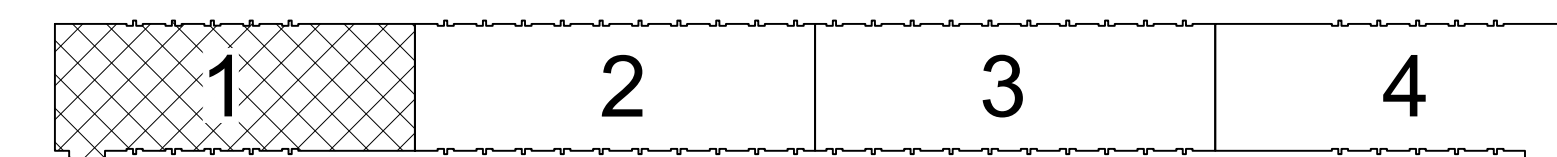
- PROVIDE ALL WIRING ABOVE CEILINGS IN AREAS WITH FINISHED CEILINGS (I.E. GYP, ACT) UNLESS OTHERWISE NOTED.
- PROVIDE ALL CONDUIT EXPOSED IN AREAS WITH NO FINISHED CEILINGS (I.E. MECHANICAL ROOMS, ELECTRICAL CLOSETS) UNLESS OTHERWISE NOTED.
- PROVIDE ALL WIRING AND CONDUIT WITH THE REQUIRED SUPPORT/HANGERS. INSTALL ALL SUPPORTS FROM THE BUILDING STRUCTURAL STEEL.
- INSTALL ALL INITIATING DEVICES IN A MANNER THAT PROVIDES ACCESSIBILITY FOR PERIODIC INSPECTION, TESTING AND MAINTENANCE.

DRAWING KEYNOTES

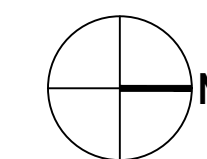
- PROVIDE WIRE, CONDUIT, AND AN ADDRESSABLE RELAY OR CONTROL MODULE WITHIN 3 FEET OF THE ACCESS DOOR CONTROLLER TO RELEASE DOORS UPON ANY FIRE ALARM CONDITION FROM THE BUILDING FIRE ALARM SYSTEM. CONTRACTOR TO COORDINATE WITH THE DIRECTOR'S REPRESENTATIVE AND DOOR ACCESS CONTROL REPRESENTATIVE FOR WIRING CONNECTION REQUIREMENTS.



1 LEVEL 1 - CORE 1
SCALE: 1/16" = 1'-0"



KEY PLAN

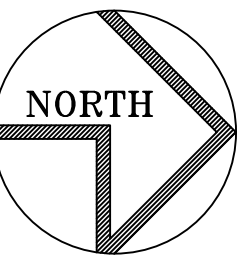




GHD Consulting Services Inc.

WARNING:

THE ALTERATION OF THIS MATERIAL IN ANY WAY, UNLESS DONE UNDER THE DIRECTION OF A COMPARABLE PROFESSIONAL, I.E. ARCHITECT FOR AN ARCHITECT, ENGINEER FOR AN ENGINEER OR LANDSCAPE ARCHITECT FOR A LANDSCAPE ARCHITECT, IS A VIOLATION OF THE NEW YORK STATE EDUCATION LAW AND/OR REGULATIONS AND IS A CLASS 'A' MISDEMEANOR.



REGISTRATION EXPIRES:
JUNE 30, 2026

CONTRACT:
ELECTRICAL

TITLE:
PROVIDE FIRE DETECTION SYSTEM

LOCATION:
SWAN STREET BUILDING
EMPIRE STATE PLAZA
ALBANY, NY

CLIENT:
OGS REAL PROPERTY
MANAGEMENT

| MARK | DATE | DESCRIPTION |
|------|------------|-------------|
| ▲ | 03/27/2024 | ADDENDUM #1 |

PROJECT NUMBER: 44894-E
DESIGNED BY: BGRTK
DRAWN BY: BGRTK
FIELD CHECK:
APPROVED:

SHEET TITLE:
LEVEL 1 - CORE 2
PLAN

DRAWING NUMBER:
FA-115

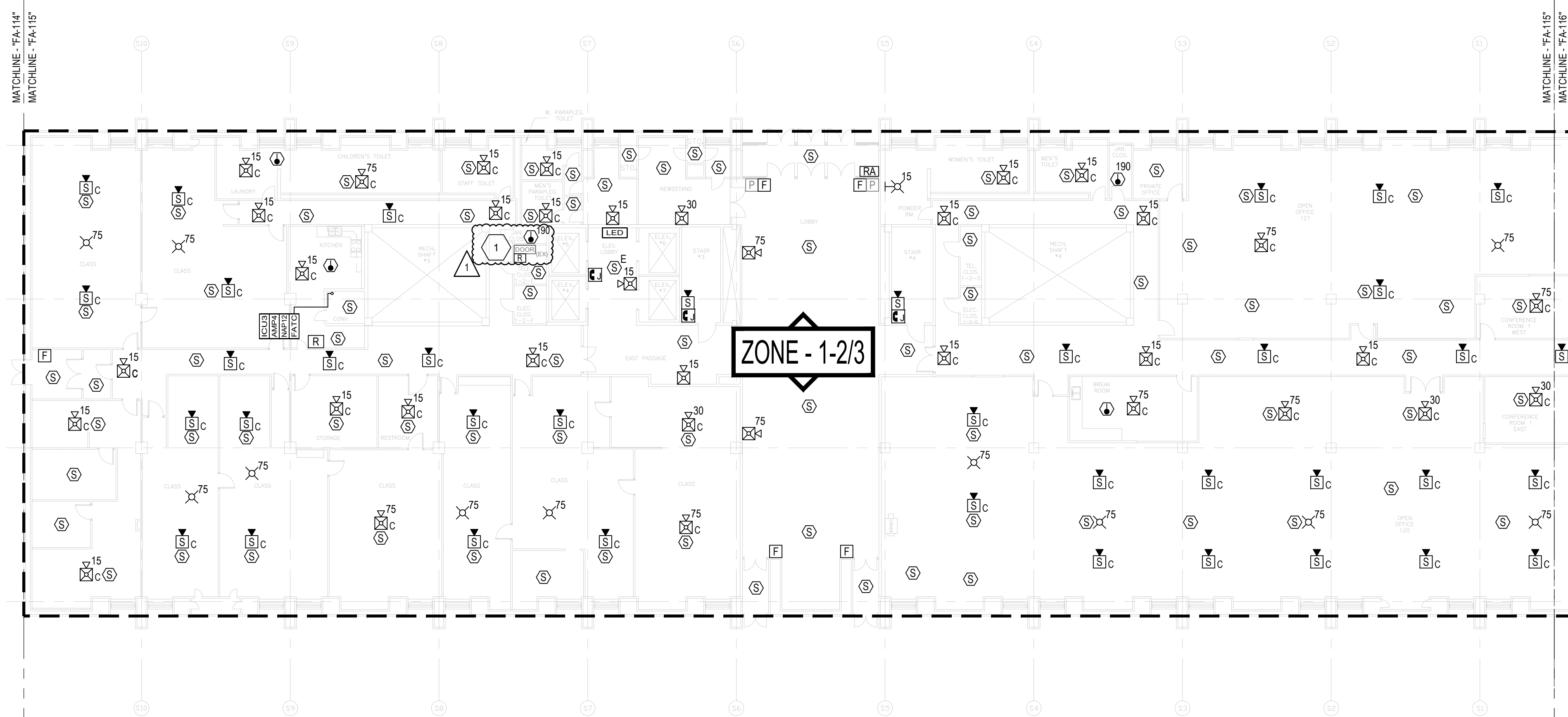
SHEET 56 OF 82

DRAWING GENERAL NOTES

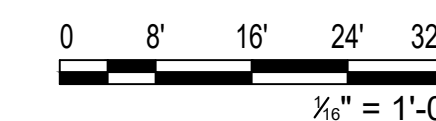
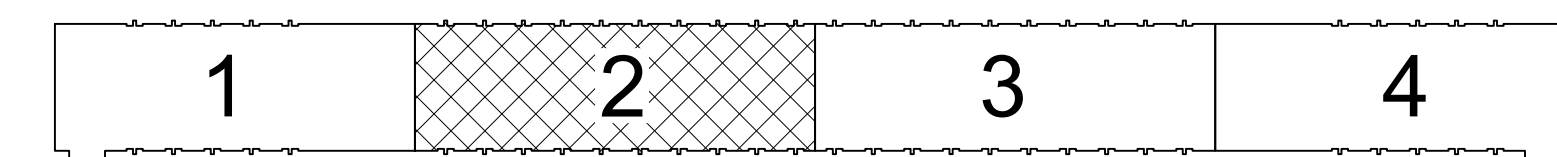
1. PROVIDE ALL WIRING ABOVE CEILINGS IN AREAS WITH FINISHED CEILINGS (I.E. GYP, ACT) UNLESS OTHERWISE NOTED.
2. PROVIDE ALL CONDUIT EXPOSED IN AREAS WITH NO FINISHED CEILINGS (I.E. MECHANICAL ROOMS, ELECTRICAL CLOSETS) UNLESS OTHERWISE NOTED.
3. PROVIDE ALL WIRING AND CONDUIT WITH THE REQUIRED SUPPORT/HANGERS. INSTALL ALL SUPPORTS FROM THE BUILDING STRUCTURAL STEEL.
4. INSTALL ALL INITIATING DEVICES IN A MANNER THAT PROVIDES ACCESSIBILITY FOR PERIODIC INSPECTION, TESTING AND MAINTENANCE.

DRAWING KEYNOTES

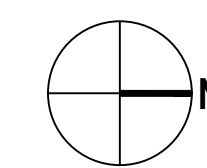
1. PROVIDE WIRE, CONDUIT, AND AN ADDRESSABLE RELAY OR CONTROL MODULE WITHIN 3 FEET OF THE ACCESS DOOR CONTROLLER TO RELEASE DOORS UPON ANY FIRE ALARM CONDITION FROM THE BUILDING FIRE ALARM SYSTEM. CONTRACTOR TO COORDINATE WITH THE DIRECTOR'S REPRESENTATIVE AND DOOR ACCESS CONTROL REPRESENTATIVE FOR WIRING CONNECTION REQUIREMENTS.



1 LEVEL 1 - CORE 2
SCALE: 1/16" = 1'-0"



KEY PLAN

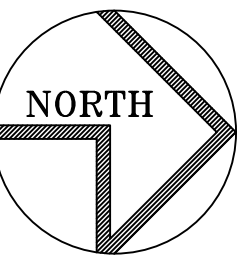




GHD Consulting Services Inc.

WARNING:

THE ALTERATION OF THIS MATERIAL IN ANY WAY, UNLESS DONE UNDER THE DIRECTION OF A COMPARABLE PROFESSIONAL, I.E. ARCHITECT FOR AN ARCHITECT, ENGINEER FOR AN ENGINEER OR LANDSCAPE ARCHITECT FOR A LANDSCAPE ARCHITECT, IS A VIOLATION OF THE NEW YORK STATE EDUCATION LAW AND/OR REGULATIONS AND IS A CLASS 'A' MISDEMEANOR.



REGISTRATION EXPIRES:
JUNE 30, 2026

CONTRACT:

ELECTRICAL

TITLE: PROVIDE FIRE DETECTION SYSTEM

LOCATION: SWAN STREET BUILDING
EMPIRE STATE PLAZA
ALBANY, NY

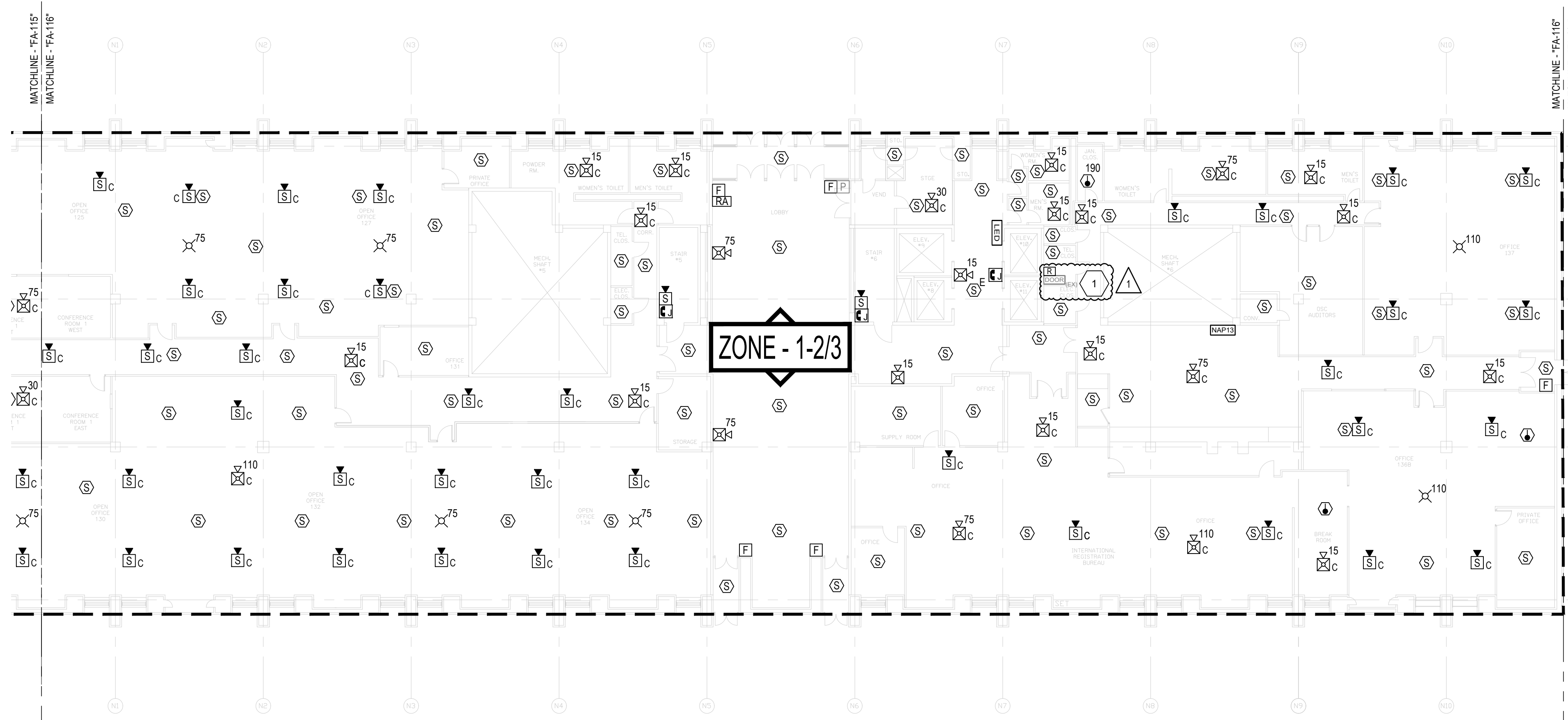
CLIENT: OGS REAL PROPERTY
MANAGEMENT

DRAWING GENERAL NOTES

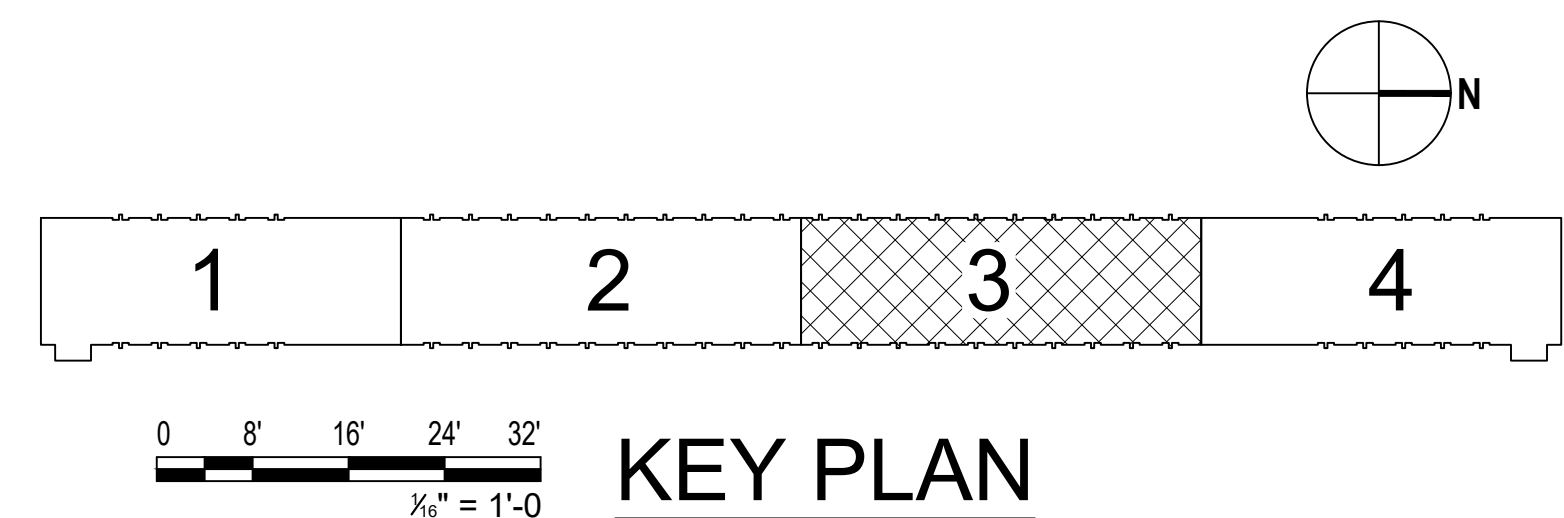
1. PROVIDE ALL WIRING ABOVE CEILINGS IN AREAS WITH FINISHED CEILINGS (I.E. GYP. ACT) UNLESS OTHERWISE NOTED.
2. PROVIDE ALL CONDUIT EXPOSED IN AREAS WITH NO FINISHED CEILINGS (I.E. MECHANICAL ROOMS, ELECTRICAL CLOSETS) UNLESS OTHERWISE NOTED.
3. PROVIDE ALL WIRING AND CONDUIT WITH THE REQUIRED SUPPORT HANGERS. INSTALL ALL SUPPORTS FROM THE BUILDING STRUCTURAL STEEL.
4. INSTALL ALL INITIATING DEVICES IN A MANNER THAT PROVIDES ACCESSIBILITY FOR PERIODIC INSPECTION, TESTING AND MAINTENANCE.

DRAWING KEYNOTES

1. PROVIDE WIRE, CONDUIT, AND AN ADDRESSABLE RELAY OR CONTROL MODULE WITHIN 3 FEET OF THE ACCESS DOOR CONTROLLER TO RELEASE DOORS UPON ANY FIRE ALARM CONDITION FROM THE BUILDING FIRE ALARM SYSTEM. CONTRACTOR TO COORDINATE WITH THE DIRECTOR'S REPRESENTATIVE AND DOOR ACCESS CONTROL REPRESENTATIVE FOR WIRING CONNECTION REQUIREMENTS.



1 LEVEL 1 - CORE 3
SCALE: 1/16" = 1'-0"



| MARK | DATE | DESCRIPTION |
|------|------------|-------------|
| △ | 03/27/2024 | ADDENDUM #1 |

PROJECT NUMBER: **44894-E**
DESIGNED BY: BGRTK
DRAWN BY: BGRTK
FIELD CHECK:
APPROVED:

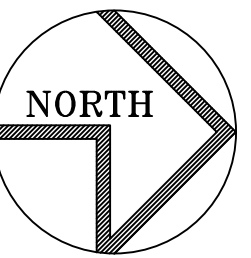
SHEET TITLE:
**LEVEL 1 - CORE 3
PLAN**

DRAWING NUMBER:
FA-116



GHD Consulting Services Inc.

WARNING:
THE ALTERATION OF THIS MATERIAL IN ANY WAY, UNLESS DONE UNDER THE DIRECTION OF A COMPARABLE PROFESSIONAL, I.E. ARCHITECT FOR AN ARCHITECT, ENGINEER FOR AN ENGINEER OR LANDSCAPE ARCHITECT FOR A LANDSCAPE ARCHITECT, IS A VIOLATION OF THE NEW YORK STATE EDUCATION LAW AND/OR REGULATIONS AND IS A CLASS 'A' MISDEMEANOR.



REGISTRATION EXPIRES:
JUNE 30, 2026

CONTRACT:
ELECTRICAL

TITLE:
PROVIDE FIRE DETECTION SYSTEM

LOCATION:
SWAN STREET BUILDING
EMPIRE STATE PLAZA
ALBANY, NY

CLIENT:
OGS REAL PROPERTY
MANAGEMENT

| | | |
|--|--|--|
| | | |
| | | |
| | | |
| | | |
| | | |
| | | |

| | | |
|------|------|-------------|
| MARK | DATE | DESCRIPTION |
|------|------|-------------|

PROJECT NUMBER: **44894-E**

DESIGNED BY: BGR TK

DRAWN BY: BGR TK

FIELD CHECK:

APPROVED:

SHEET TITLE:

**LEVEL 1 - CORE 4
PLAN**

DRAWING NUMBER:
FA-117

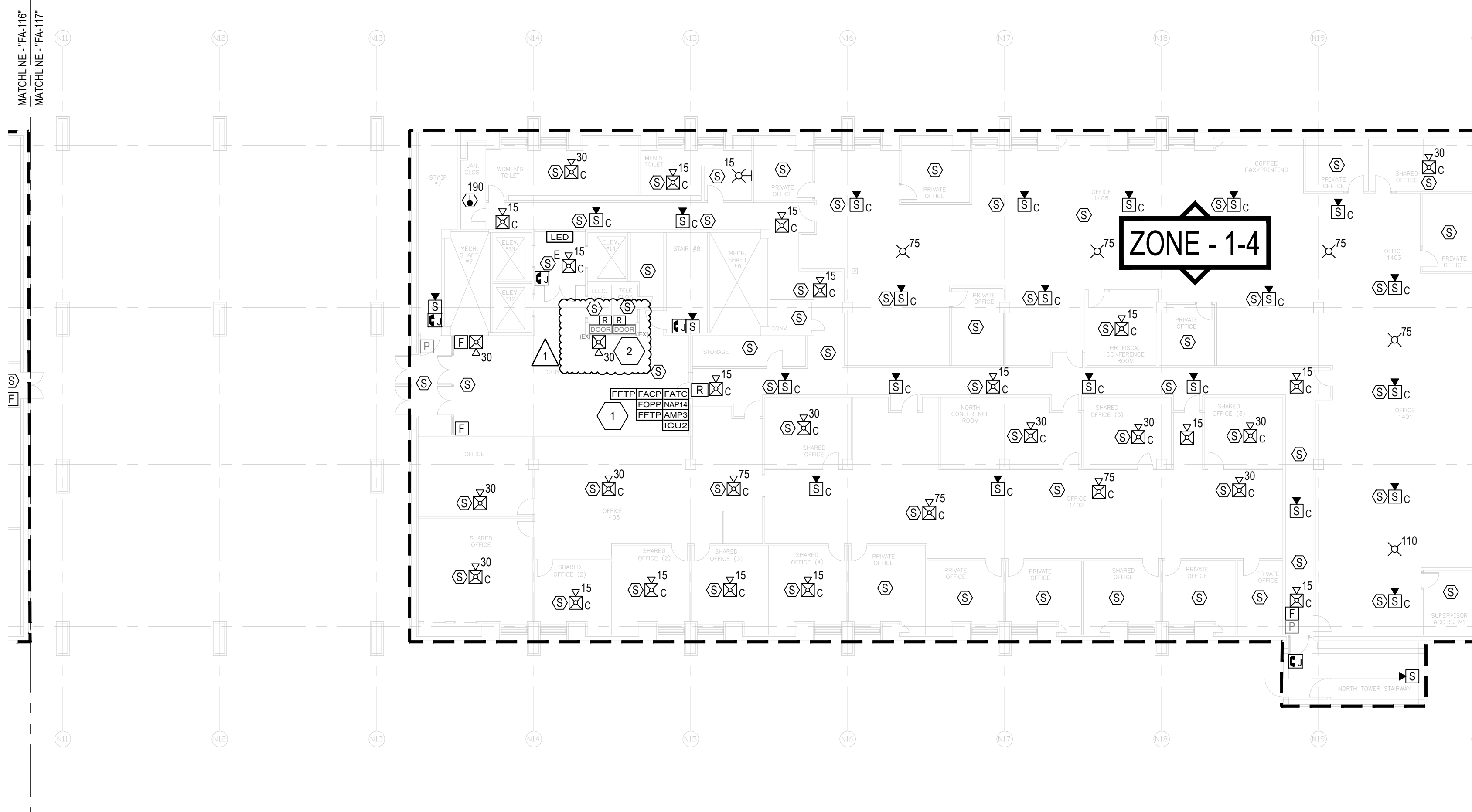
SHEET 58 OF 82

DRAWING GENERAL NOTES

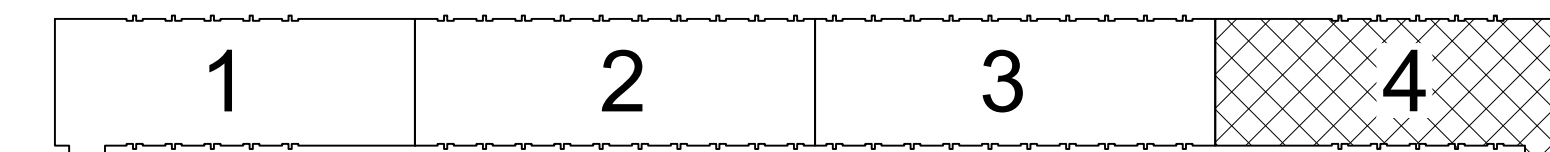
1. PROVIDE ALL WIRING ABOVE CEILINGS IN AREAS WITH FINISHED CEILINGS (I.E. GYP, ACT) UNLESS OTHERWISE NOTED.
2. PROVIDE ALL CONDUIT EXPOSED IN AREAS WITH NO FINISHED CEILINGS (I.E. MECHANICAL ROOMS, ELECTRICAL CLOSETS) UNLESS OTHERWISE NOTED.
3. PROVIDE ALL WIRING AND CONDUIT WITH THE REQUIRED SUPPORT/HANGERS. INSTALL ALL SUPPORTS FROM THE BUILDING STRUCTURAL STEEL.
4. INSTALL ALL INITIATING DEVICES IN A MANNER THAT PROVIDES ACCESSIBILITY FOR PERIODIC INSPECTION, TESTING AND MAINTENANCE.

DRAWING KEYNOTES

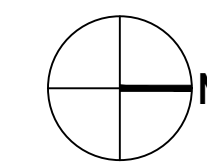
1. PROVIDE FIBEROPTIC NETWORK CABLE ROUTED FROM FACP TO EXISTING FIBEROPTIC PATCH PANEL LOCATED IN ICM-18 LOCATED ON LEVEL B3, CORE 3.
2. PROVIDE WIRE, CONDUIT, AND AN ADDRESSABLE RELAY OR CONTROL MODULE WITHIN 3 FEET OF THE ACCESS DOOR CONTROLLER TO RELEASE DOORS UPON ANY FIRE ALARM CONDITION FROM THE BUILDING FIRE ALARM SYSTEM. CONTRACTOR TO COORDINATE WITH THE DIRECTOR'S REPRESENTATIVE AND DOOR ACCESS CONTROL REPRESENTATIVE FOR WIRING CONNECTION REQUIREMENTS.



1 LEVEL 1 - CORE 4
SCALE: 1/16" = 1'-0"



KEY PLAN

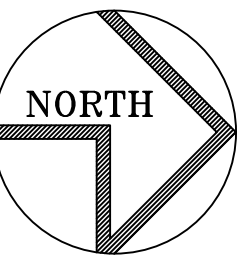




GHD Consulting Services Inc.

WARNING:

THE ALTERATION OF THIS MATERIAL IN ANY WAY, UNLESS DONE UNDER THE DIRECTION OF A COMPARABLE PROFESSIONAL, I.E. ARCHITECT FOR AN ARCHITECT, ENGINEER FOR AN ENGINEER OR LANDSCAPE ARCHITECT FOR A LANDSCAPE ARCHITECT, IS A VIOLATION OF THE NEW YORK STATE EDUCATION LAW AND/OR REGULATIONS AND IS A CLASS 'A' MISDEMEANOR.



REGISTRATION EXPIRES:
JUNE 30, 2026

CONTRACT:

ELECTRICAL

TITLE: PROVIDE FIRE DETECTION SYSTEM

LOCATION: SWAN STREET BUILDING
EMPIRE STATE PLAZA
ALBANY, NY

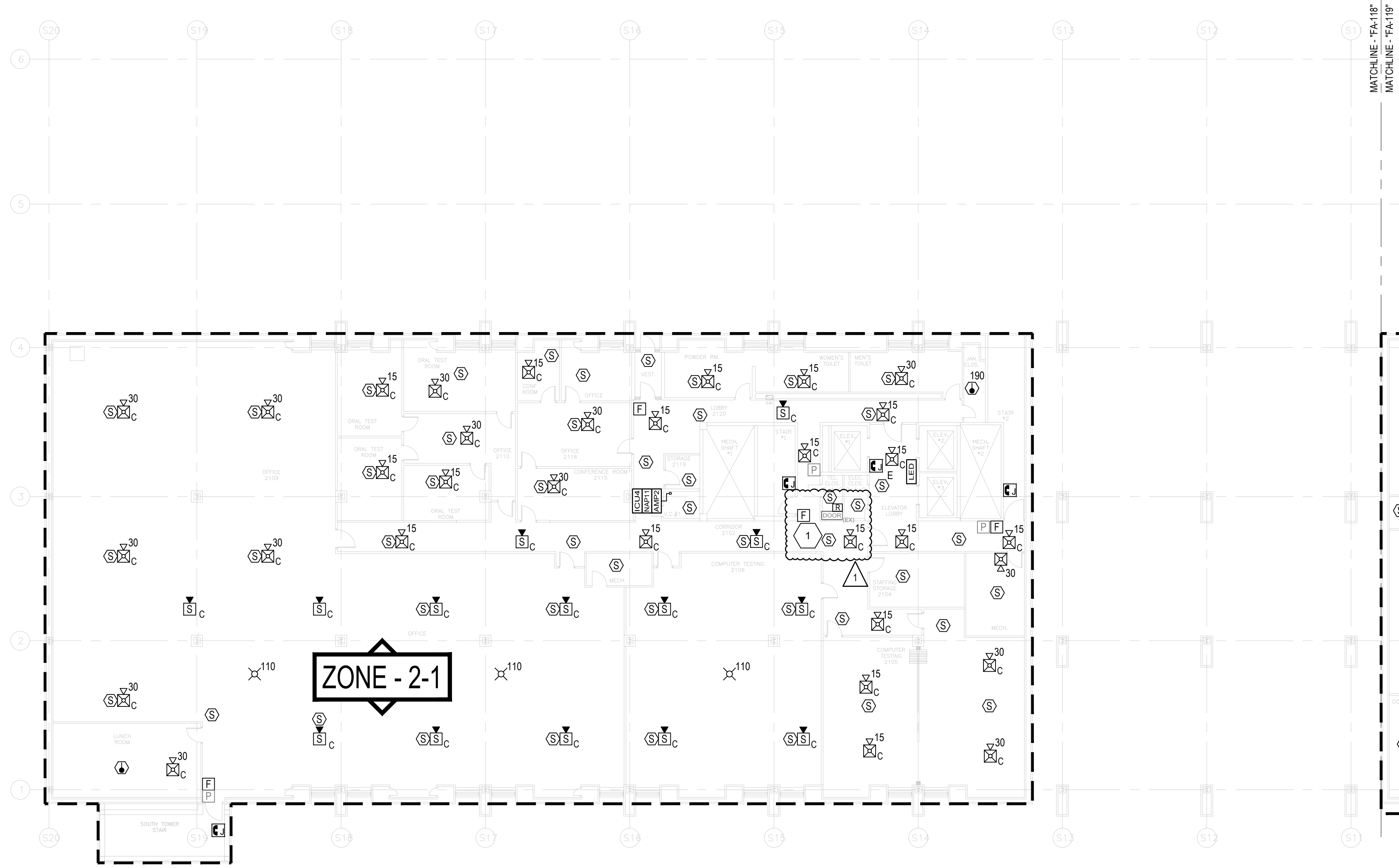
CLIENT: OGS REAL PROPERTY
MANAGEMENT

DRAWING GENERAL NOTES

1. PROVIDE ALL WIRING ABOVE CEILINGS IN AREAS WITH FINISHED CEILINGS (I.E. GYP. ACT) UNLESS OTHERWISE NOTED.
2. PROVIDE ALL CONDUIT EXPOSED IN AREAS WITH NO FINISHED CEILINGS (I.E. MECHANICAL ROOMS, ELECTRICAL CLOSETS) UNLESS OTHERWISE NOTED.
3. PROVIDE ALL WIRING AND CONDUIT WITH THE REQUIRED SUPPORTHANGERS. INSTALL ALL SUPPORTS FROM THE BUILDING STRUCTURAL STEEL.
4. INSTALL ALL INITIATING DEVICES IN A MANNER THAT PROVIDES ACCESSIBILITY FOR PERIODIC INSPECTION, TESTING AND MAINTENANCE.

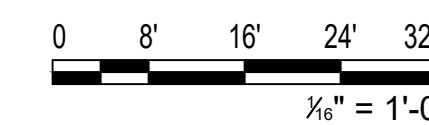
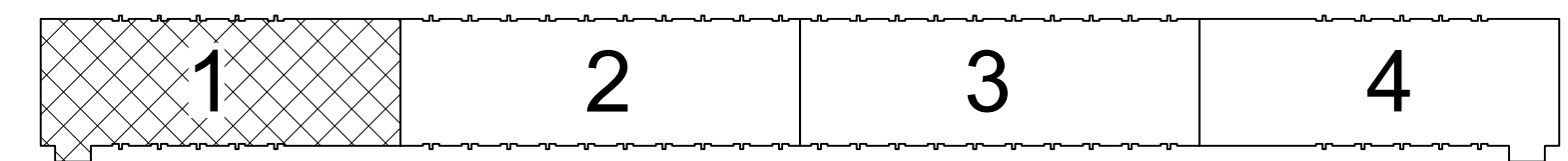
DRAWING KEYNOTES

1. PROVIDE WIRE, CONDUIT, AND AN ADDRESSABLE RELAY OR CONTROL MODULE WITHIN 3 FEET OF THE ACCESS DOOR CONTROLLER TO RELEASE DOORS UPON ANY FIRE ALARM CONDITION FROM THE BUILDING FIRE ALARM SYSTEM. CONTRACTOR TO COORDINATE WITH THE DIRECTOR'S REPRESENTATIVE AND DOOR ACCESS CONTROL REPRESENTATIVE FOR WIRING CONNECTION REQUIREMENTS.

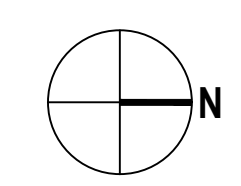


ZONE - 2-1

1 LEVEL 2 - CORE 1
SCALE: 1/16" = 1'-0"



KEY PLAN



| MARK | DATE | DESCRIPTION |
|------|------------|-------------|
| ▲ | 03/27/2024 | ADDENDUM #1 |

PROJECT NUMBER: **44894-E**
DESIGNED BY: BGRTK
DRAWN BY: BGRTK
FIELD CHECK:
APPROVED:
SHEET TITLE:

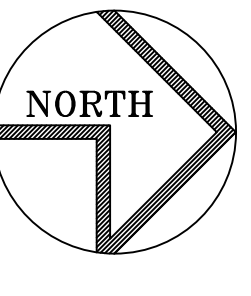
**LEVEL 2 - CORE 1
PLAN**

DRAWING NUMBER:
FA-118



GHD Consulting Services Inc.

WARNING:
THE ALTERATION OF THIS MATERIAL IN ANY WAY, UNLESS DONE UNDER THE DIRECTION OF A COMPARABLE PROFESSIONAL, I.E. ARCHITECT FOR AN ARCHITECT, ENGINEER FOR AN ENGINEER OR LANDSCAPE ARCHITECT FOR A LANDSCAPE ARCHITECT, IS A VIOLATION OF THE NEW YORK STATE EDUCATION LAW AND/OR REGULATIONS AND IS A CLASS 'A' MISDEMEANOR.



REGISTRATION EXPIRES:
JUNE 30, 2026

CONTRACT: **ELECTRICAL**

TITLE: **PROVIDE FIRE DETECTION SYSTEM**

LOCATION: **SWAN STREET BUILDING
EMPIRE STATE PLAZA
ALBANY, NY**

CLIENT: **OGS REAL PROPERTY
MANAGEMENT**

| | | |
|--|--|--|
| | | |
| | | |
| | | |
| | | |
| | | |
| | | |
| | | |
| | | |
| | | |
| | | |

| | | |
|-----------------|------------|-------------|
| MARK | DATE | DESCRIPTION |
| ▲ | 03/27/2024 | ADDENDUM #1 |
| PROJECT NUMBER: | 44894-E | |
| DESIGNED BY: | BGRTK | |
| DRAWN BY: | BGRTK | |
| FIELD CHECK: | | |
| APPROVED: | | |
| SHEET TITLE: | | |

**LEVEL 4 - CORE 4
PLAN**

DRAWING NUMBER:
FA-129

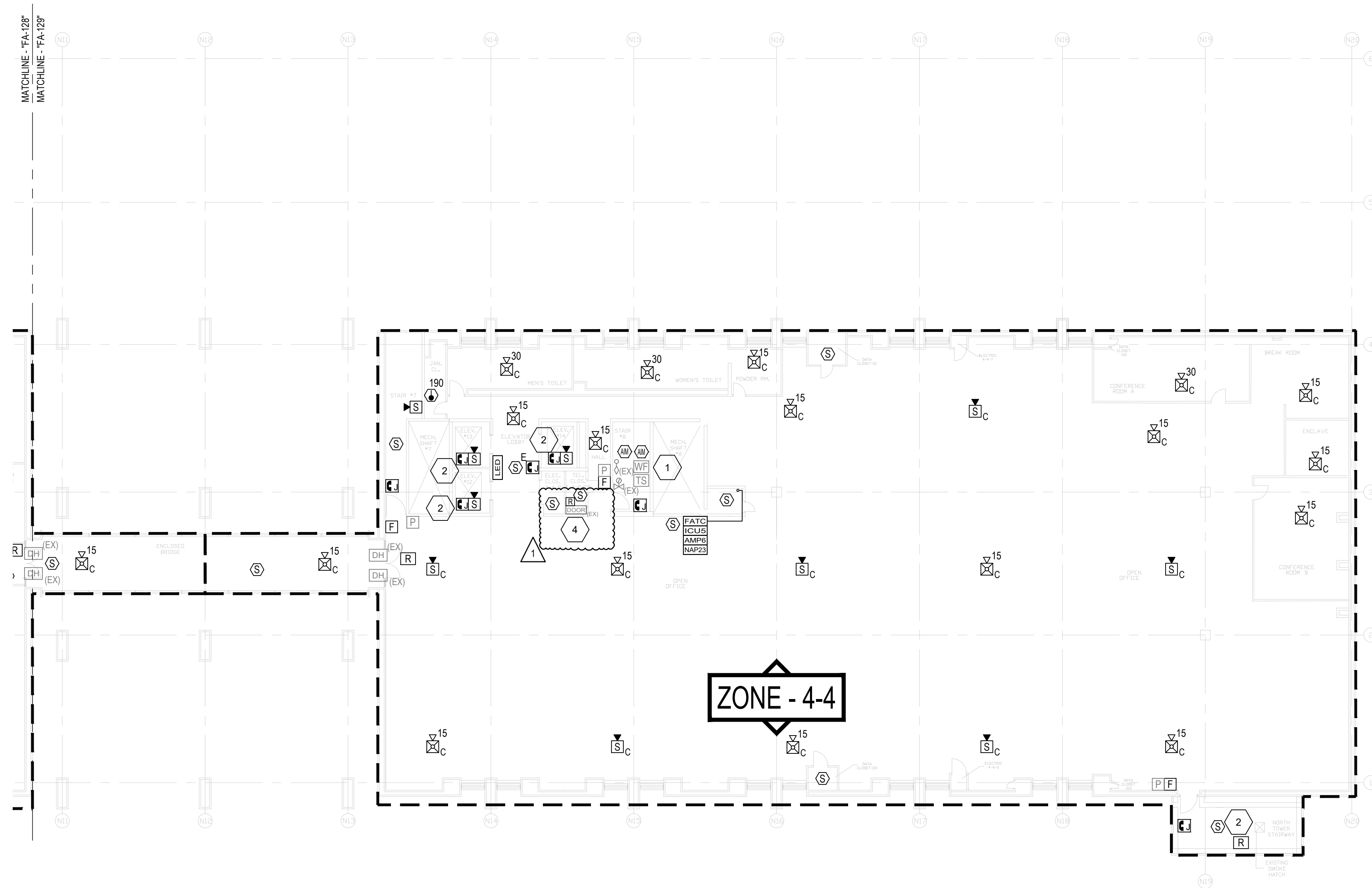
SHEET 70 of 82

DRAWING GENERAL NOTES

1. PROVIDE ALL WIRING ABOVE CEILINGS IN AREAS WITH FINISHED CEILINGS (I.E. GYP, ACT) UNLESS OTHERWISE NOTED.
2. PROVIDE ALL CONDUIT EXPOSED IN AREAS WITH NO FINISHED CEILINGS (I.E. MECHANICAL ROOMS, ELECTRICAL CLOSETS) UNLESS OTHERWISE NOTED.
3. PROVIDE ALL WIRING AND CONDUIT WITH THE REQUIRED SUPPORT/HANGERS. INSTALL ALL SUPPORTS FROM THE BUILDING STRUCTURAL STEEL.
4. INSTALL ALL INITIATING DEVICES IN A MANNER THAT PROVIDES ACCESSIBILITY FOR PERIODIC INSPECTION, TESTING AND MAINTENANCE.

DRAWING KEYNOTES

1. PROVIDE ADDRESSABLE INPUT MODULES FOR EXISTING SPRINKLER SYSTEM WATERFLOW SWITCH AND CONTROL VALVE TAMPER SWITCH.
2. PROVIDE SPEAKER AND FIREFIGHTER PHONE JACK IN ELEVATOR.
3. SMOKE DETECTOR SHALL BE CIRCUITED TO OPEN THE TOP OF STAIR SMOKE HATCH UPON ACTIVATION. PROVIDE RELAY. REMOVE EXISTING 120VAC ACTUATOR AND PROVIDE 24VDC ACTUATOR.
4. PROVIDE WIRE, CONDUIT, AND AN ADDRESSABLE RELAY OR CONTROL MODULE WITHIN 3 FEET OF THE ACCESS DOOR CONTROLLER TO RELEASE DOORS UPON ANY FIRE ALARM CONDITION FROM THE BUILDING FIRE ALARM SYSTEM. CONTRACTOR TO COORDINATE WITH THE DIRECTOR'S REPRESENTATIVE AND DOOR ACCESS CONTROL REPRESENTATIVE FOR WIRING CONNECTION REQUIREMENTS.



1 LEVEL 4 - CORE 4
SCALE: 1/16" = 1'-0"

